

PRESQU'ÎLE DE
CROZON
AULNE MARITIME
NATURELLEMENT



PRACTICAL GUIDE



crozon-tourisme.bzh

WELCOME

Morgat,
Beach and Port

TO THE CROZON PENINSULA - AULNE MARITIME!

Why visit our Tourist Offices during your stay?

- **MEET OUR TEAM OF ADVISORS**

We welcome you all year round to meet your expectations and provide personalized assistance—in our offices, by phone, by email, on our website, and via social media.

- **DISCOVER A WIDE RANGE OF ACTIVITIES**

Every day, we strive to promote responsible and local tourism while ensuring a high-quality welcome. The complementarity of our ten municipalities, their unique characteristics, and the expertise of tourism professionals make our destination truly special.

Thanks to our various partners, the Crozon Peninsula – Aulne Maritime Tourist Office offers a wealth of options to make your stay a success.

We also have a boutique and offer a variety of ticketing services at our offices.

- **SUPPORT OUR COMMITMENT TO RESPONSIBLE TOURISM**

Our mission: to foster sustainable tourism by connecting nature-loving visitors with an exceptional landscape, a region, and its people—proud of their heritage and committed to preserving it.

- **BOOK A GUIDED TOUR**

Explore Camaret-sur-Mer, Le Faou (a «Petite Cité de Caractère»), or the Pointe des Espagnols and the fortification route. Guided tours are available in season with one of our experts.



TOURIST OFFICES

Open year-round.



CAMARET-SUR-MER

1A rue des Quatre Vents
29570 Camaret-sur-Mer
+33 (0)2 98 27 93 60

tourisme-camaretsurmer@comcom-crozon.bzh
Free Wi-Fi 24/7



CROZON

Boulevard Pralognan La Vanoise
29160 Crozon
+33 (0)2 98 27 07 92

tourisme@comcom-crozon.bzh
24/7 Information Kiosk

OPENING HOURS

July – August:

- Monday to Saturday:
non-stop from 9:30 AM to 6:30 PM
- Sunday: 10:00 AM to 1:00 PM

October 1st – March 31st:

- 9:30 AM – 12:00 PM
and 1:30 PM – 5:30 PM
- Closed on Thursday afternoons

April 1st – September 30th:

- 9:30 AM – 12:30 PM
and 2:00 PM – 6:00 PM

Opening hours for the seasonal offices in Landévennec, Lanvéoc, Le Faou, Morgat, Roscanvel, and Telgruc-sur-Mer are available on our website: crozon-tourisme.bzh.

Hours are subject to change.

www.crozon-tourisme.bzh

Join us on
Facebook & Instagram!



@PresquiledCrozonetourisme



@crozonetourisme

Download the **IntraMuros** mobile app to stay updated on local events.



Certified Category 1 Tourist Office



Heading towards an
exceptional destination!



OUR SERVICES

TICKETING SERVICES

- Shows
- Leisure activities
- Excursions
- Maritime crossings
- Guided tours



We update the **EVENTS CALENDAR** daily, all year round.



Check it out on our website:
crozon-tourisme.bzh
Or via the **IntraMuros** mobile app.



EXPLORE OUR BROCHURES

- Map of the Crozon Peninsula - Aulne Maritime
- Forests map
- Fortifications map
- Guide for motorhomes and campervans
- Natural areas guide
- Regional Geological Nature Reserve



**FIND
ACCOMMODATION**



**GET ALL THE DETAILS
ON TOURIST TAX
REGULATIONS.**





Iconic Spot:
Térénez Bridge

HOW TO GET HERE

ONE TRIP,
MULTIPLE OPTIONS!



BY CAR -

TRAVEL WITH FREEDOM!

To reach the Crozon Peninsula – Aulne Maritime, expect:

- 1 hour (65 km) from Brest
- 1h15 (70 km) from Quimper
- 1h30 (90 km) from Roscoff
- 2h50 (220 km) from Rennes
- 6 hours (600 km) from Paris

BY BUS -

TRAVEL EASILY BETWEEN TOWNS.

Bus stations are located near SNCF train stations and town centers, ensuring smooth connections between urban transport and the BreizhGo network.

More info: Traveling by bus in Finistère | BreizhGo
To get closer to the peninsula, stop at **Brest** or **Quimper** SNCF stations, then take a **BreizhGo bus** (Lines 934 & 937) to reach the area.

TICKETS AVAILABLE AT
THE TOURIST OFFICE.

BY TRAIN

Nearby stations: Brest, Quimper, Châteaulin, Pont-de-Buis-lès-Quimerç'h.

Book your train: 3635 or www.sncf-connect.com
Download the app.

Consider train + bike!

Reserve a bike spot onboard – **Summer 2025**
Bike Service | TER BreizhGo (sncf.com)

From Brest to Camaret-sur-Mer (Line 934)

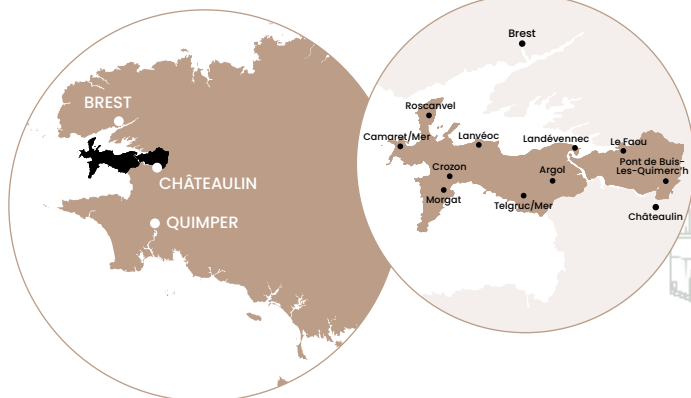
Stops: Le Faou, Rosnoën, Landévennec (Les Quatre Chemins, Route d'Argol), Argol, Telgruc-sur-Mer (Gare d'Argol & town center), Crozon Tal-ar-Groas, Lanvéoc, Crozon Le Fret, Crozon Tourist Office, Morgat (summer only), Camaret-sur-Mer Port.

From Quimper to Camaret-sur-Mer (Line 937)

Stops: Locronan, Plomodiern, Saint-Nic, Telgruc-sur-Mer (Gare d'Argol & town center), Argol, Crozon Tal-ar-Groas, Lanvéoc (Rue de l'Aviation & Le Fret stop), Crozon Tourist Office, Camaret-sur-Mer Port.

With FlixBus –

Travel to Brest or Quimper.
www.flixbus.fr



BOOK AN ON-DEMAND TRANSPORT SERVICE

Three **TAD (Transport à la Demande)** services have been set up by the **Brittany Region** in partnership with the local community. These routes allow you to:

- Reach bus stops for **Line 934 to Brest**
- Connect to the **maritime link to Brest (Le Fret)**
- Travel within **Crozon on Wednesdays and Saturdays**

These services operate with small vehicles (buses or taxis) and are available **only by reservation**, following predefined routes and stops.

To book: Call **+33 (0)2 99 300 300** between **7 AM – 5 PM**, at least **the day before** your trip (Friday for Monday travel).

OUR YEAR-ROUND PARTNERSHIPS WE COLLABORATE WITH:

- Sensation Bretagne
- Tout Commence en Finistère
- Brest Terres Océanes
- Regional Tourism Committee
- Armorique Regional Natural Park
- Le Faou – Petite Cité de Caractère
- Vauban Tower (UNESCO Heritage Site)
- The Fortifications Route

BY BOAT - LIAISON MARITIME

TICKETS AVAILABLE AT
THE TOURIST OFFICE.

After your train or bus journey, or if leaving your car in Brest, head to the **Port de Commerce** to board a ferry operated by **Brest Ouest Company** to **Crozon Le Fret**. You can bring your bike onboard too!

Info & Reservations:

- +33 (0)7 78 37 03 23
- +33 (0)2 98 33 04 18

www.lebrestoa.com





Telgruc-sur-Mer

TABLE OF CONTENTS

7>21

Discover the Crozon Peninsula – Aulne Maritime and its 10 municipalities

• The spirit of the place	12
• The essentials of the 10 municipalities	14
• Heritage sites to visit	16
• A preserved natural environment	24
• Scenic viewpoints	26
• The sea	32
• Rivers	34
• Life on the docks	35

22>34

Practical Information

• Getting around during your stay	36
• Town halls and libraries	37
• Ports	38
• Fishing	39
• Tidal schedules	39
• GR 34 and hiking trails	40
• Crozon Peninsula – Aulne Maritime map	44
• Trail running routes	48
• Local markets	50
• Cooking seafood	51
• Traditional recipes (Far and crêpes)	51

53>80

Directory



Cover Photo:
Véryac'h Beach,
Camaret-sur-Mer

**Published by the Crozon Peninsula – Aulne
Maritime Tourist Office**
SIREN: 200 066 868

Photo, illustration, and cartography credits:
Sabine Le Pape-Kerdommarec, Alexandre
Lamoureux, Mathieu Le Gall, Emeric
Jézéquel, Alain Bellonnet, Jérémy Jéhanin,
Emmanuel Berthier, Guillaume Payen.
Crozon Peninsula – Aulne Maritime

Community of Municipalities, Sensation
Bretagne.
Térénez Bridge: Engineer Michel Virlogeux,
Project Owner: Finistère Departmental
Council

Graphic Design:
Kestufabrik? – Brest – www.kestufabrik.fr

Printing:
Cloître Imprimeur – Saint-Thonan – Printed
on PEFC-certified paper

Non-contractual document. The
information provided is indicative and does
not legally bind the Crozon Peninsula –
Aulne Maritime Tourist Office.
Information valid as of February 28, 2025.

≡ here, sustainable destination ≡



Let's travel together

Traveller's charter



**In Brittany,
this marine, urban and rural land,
we whisper that ...**

Our **visitors** are warmly welcomed.
The coast is **wilder** than the inhabitants.
We welcome waves of emotions, even in the middle of a **storm**.
We engrave each moment into our **memory**, not on stones.
We pick up our litter because it's not that **much** to ask.
We turn over the **earth** in our fields, not the fine sand on the foreshore.
We eat local food just as naturally as we **enjoy** a crepe.
We happily set down our drinks to dance at a **fest-noz**.
We **watch** the ballet of the egrets on tiptoe.
We rediscover our **freedom** without leaving the hiking trails.
Our guides enchant visitors and it's no **myth**.
A **meeting** with Brittany is shared with pride.



The Tourist Offices of Brittany welcome you.
Degemer mat !

Share and sign the traveller's charter:
www.charte-du-voyageur.bzh

Project supported by:







ARMORIQUE GEOPARK



From the Crozon Peninsula in the west to the Monts d'Arrée in the east, the Armorique Regional Natural Park invites you to explore a vast chapter of Earth's history, set within coastal and mountainous landscapes. Travel back over **500 million years** to uncover the secrets of forgotten worlds. These geological treasures have been recognized as a **UNESCO Global Geopark**.

This region is rich in legends, archaeological remains, and traditional architecture that showcases the unique characteristics of local stones such as **Kersantite, Armorican sandstone, and Roz stone**.





NATURA 2000



The Community of Municipalities actively participates in the Natura 2000 program, an initiative dedicated to protecting natural areas in the Crozon Peninsula.

WHAT IS NATURA 2000?

Natura 2000 is a European conservation program aimed at both **preserving biodiversity and enhancing local territories**.

It establishes a network of protected sites across Europe to ensure a coherent approach to the protection of species and natural habitats.

Several Natura 2000 sites cover the Crozon Peninsula – Aulne Maritime area:

- “Presqu’île de Crozon” (managed by the Community of Municipalities)
- “Rade de Brest – Estuary of the Aulne”
- “Menez-Hom / Argol”
- Marine site “Côte de Crozon”
- “Rade de Brest – Baie de Daoulas / Anse du Poulmic” (for bird protection)
- “Camaret” (for bird protection)



DISCOVERING THE CROZON PENINSULA - AULNE MARITIME AND ITS 10 MUNICIPALITIES

Telgruc-sur-Mer

THE SPIRIT OF THE PLACE

NATURAL SPACES
AND RESPONSIBLE
TRAVEL PRACTICES



Réserve Naturelle Régionale
**SITES GÉOLOGIQUES DE
LA PRESQU'ÎLE DE CROZON**



Located within the **Armorique Regional Natural Park**, this **designated natural reserve** includes **27 coastal sites** of geological and biological significance. The reserve's mission is to **study, protect, promote, and raise awareness** of these areas through conservation efforts, educational programs, exhibitions, events, and access management.

At the **Cap de la Chèvre, Pointe de Dinan, Tavelle, and Bellec**, a colorful landscape of yellow, pink, and purple unfolds before you. This is the **heathland**, a characteristic Breton landscape that is **protected at the European level**. The mix of **gorse and heather** provides **year-round color**, and in February, the blooming **European gorse** releases a delightful **vanilla scent**.

More information:

www.reservepresquiledecrozon.bzh



ARMORIQUE REGIONAL NATURAL PARK

This region leaves a **lasting impression** on visitors who venture into this enchanting part of **Finistère**. From the **lighthouses of the Iroise Sea** to the **white cliffs of Crozon**, from the **glimmering meanders of the Aulne River** to the **metallic reflections of the Brest harbor**, or the **golden-hued peatlands of the Monts d'Arrée**, nature lovers will find some of the most stunning landscapes in **Brittany**.

Visitor Center:

15 Place aux Foires – 29590 Le Faou

+33 (0)2 98 81 90 08

www.pnr-armorique.fr

For a responsible holiday, choose **Valeurs Parc Naturel Régional** certified providers.



WASTE MANAGEMENT

The Community of Municipalities of the Crozon Peninsula - Aulne Maritime has implemented an incentive-based waste fee, in line with the Grenelle I Law. The goal is to reduce waste production, ensure fair contributions from users, and control costs.

FOR VISITORS STAYING IN THE AREA

All tourist accommodations are equipped with an access card for shared waste disposal bins and/or have designated bins:

- Green lid bins – Household waste
- Yellow lid bins – Recyclables

FOR MOTORHOME TRAVELERS

Designated service areas are available for waste disposal.

FOR VISITING BOATERS

- **Port of Camaret** – Free access code available upon request at the harbor office.
- **Port of Morgat** – Free waste containers available at the visitor dock exit.

FOR PICNICKERS

You can dispose of waste in locked collection bins (see the list on the website below). Illegal dumping is strictly prohibited.

DUMPING WASTE, even next to a public collection point, is a criminal offense under the French Penal Code.

More information: www.comcom-crozon.com/environnement/collecte-des-dechets/en-vacances-que-faire-de-ses-dechets-2



AVAILABLE AT
THE TOURIST
OFFICE.

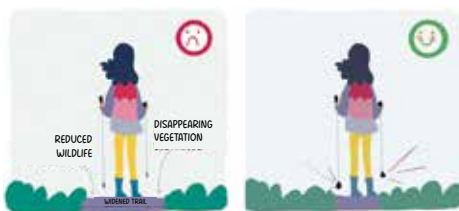


Best Practices in Natural Areas

WHILE HIKING



✓ I DO MY BUSINESS WITHOUT LEAVING A TRACE.



✓ MY HIKING POLES HAVE PLASTIC TIPS.



✓ I STAY ON THE EXISTING TRAIL AND OBSERVE NATURE FROM THERE.



ARGOL



LANDÉVENNEC

THE ESSENTIALS

OF THE 10 CITIES



PONT DE BUIS-LES-QUIMERC'H



CROZON



CAMARET-SUR-MER





ROSCANVEL



LANVÉOC



ROSNOËN



TELGRUC-SUR-MER LE FAOU





HERITAGE

TO VISIT

EXPLORE THE FORTIFICATIONS ROUTE



The Crozon Peninsula is home to **numerous fortifications**, reflecting its **defensive role throughout the centuries**.

From Vauban to World War II, embark on a journey through time and history along the Fortifications Route of the Crozon Peninsula - Aulne Maritime.

Maritime invasions have always been a threat to Brest and its surrounding region. As early as the 17th century, Vauban, responsible for border defense under Louis XIV, built fortifications along the coasts of the Brest harbor entrance. This **extensive defense plan** was later expanded during the 19th and 20th centuries, under Napoleon I and Louis-Philippe, and reinforced during the German occupation with numerous bunkers dotting the coastline.

Ask for the fortifications map at our information centers. It will help you explore the coastline in search of strategic defense structures.



THE VAUBAN UNESCO NETWORK



Established in November 2005, the Network of Major Vauban Sites is a nonprofit association that brings together the 12 fortifications designed by Vauban and listed as UNESCO World Heritage Sites.

The 12 member sites are located in Arras, Besançon, Blaye/Cussac-Fort-Médoc, Briançon, Camaret-sur-Mer, Longwy, Mont-Dauphin, Mont-Louis, Neuf-Brisach, Saint-Martin-de-Ré, Saint-Vaast-La-Hougue, and Villefranche-de-Conflent. The **Vauban Tower in Camaret-sur-Mer** was built at the end of the 17th century based on the plans of engineer Traverse. It is part of a defensive system composed of various coastal batteries designed to protect the port of Brest. Even before its completion, it faced its first test on June 18, 1694, during the Battle of Camaret, where Vauban successfully repelled the attack of 147 Anglo-Dutch ships attempting to land.

Now serving as an **interpretation center**, the Vauban Tower welcomes visitors year-round for fascinating historical tours.

VISIT A MUSEUM

Did you know about the Pass'Musées in the Crozon Peninsula – Aulne Maritime? This pass works with six partner museums:

The Vauban UNESCO Interpretation Center in Camaret

The Maison des Minéraux in Crozon

The Living Museum of Old Trades in Argol

Breizh Odyssée in Landévennec

The Museum of the Former Abbey of Landévennec

The Rural School Museum in Trégarvan

Once you visit one of these museums, you'll receive a discount on the entry fee for the others.



LE FAOU

A «PETITE CITÉ
DE CARACTÈRE»
(SMALL CITY
OF CHARACTER)



Founded in 1975, the **Petites Cités de Caractère® de Bretagne** association brings together 31 municipalities committed to strong values, including heritage conservation and enhancement.

Le Faou has been a member of the Petite Cité de Caractère® network since 1989. It was officially recognized on **September 29, 2016**, revalidated on **April 3, 2023**, and is engaged in the **Multi-Year Heritage Enhancement Program until 2027**.

This label highlights the architectural value of the town center and allows owners of historic houses within Le Faou's designated heritage area to receive financial aid for renovations.

As you walk down the **main street**, you'll notice a row of **timber-framed houses** with **street-facing gables** (dating back to the 16th century). These houses reflect an urban layout designed to make trade activities visible to passing travelers. Over the centuries, their facades have been covered with finely worked **slate tiles**, giving each house a unique character. Le Faou is one of the few towns in Brittany to have preserved this type of



architecture.

At the end of this historic trading street, you'll find the **remarkable Saint-Sauveur Church** (16th century), standing proudly at the head of the Steir Goz estuary.

Our **tourist office** is located next to the Yves Nouvel hall at **10 Rue du Général de Gaulle**. The office is open **from June to September**.



1



2



3



4



5



6



7

1. Fort de l'Aber / CROZON
2. Pointe de l'Aber / CROZON
3. Vauban Tower / CAMARET
4. Cap de la Chèvre, Naval Aviation Memorial / CROZON
5. Fort de Lanvéoc
6. Kador Lighthouse / MORGAT
7. Fort and Battery of Le Gouin / CAMARET



LA POINTE DES ESPAGNOLS

The development of historical sites along the Fortifications Route is an economic, environmental, and cultural priority.

La Pointe des Espagnols, owned by the Conservatoire du Littoral and managed by the local community, is a site of exceptional value due to its strategic location facing the Brest Narrows, its stunning landscapes, and its rich historical heritage. Efforts have been made to restore and highlight its significance.

Beyond its natural beauty, the site's uniqueness lies in the **layers of fortifications** built over the centuries. Recently, forgotten historical structures have been uncovered, revealing old batteries and fortified elements. Overgrown vegetation has been cleared, and masonry has been restored and reinforced.

A **19th-century cannon** was installed on-site, followed by the excavation of a **100 mm battery**,



which had been buried under debris for years—both major milestones in the restoration process. The **stone gateway** leading to the point had been scattered and buried throughout the site. These stones have now been gathered and reassembled, restoring the gateway, which now overlooks the ramparts. It can be admired from the restored access footbridge.



VISITING CIRCUIT

A small fort serves as a summer exhibition space and acts as a tourist information point in July and August.

The project also includes the creation of a walking tour that leads visitors through the site, allowing them to explore hidden fortifications such as a model tower, caponier, and defensive enclosure before reaching a panoramic viewpoint overlooking the bay from the cliff's edge (battery, observation post, and lookout point). A series of interpretive panels explains the military defense system, and benches and orientation tables are available for visitors.

TRAFFIC AND ACCESSIBILITY

- Road traffic has been **calmed** with chicanes and special paving to signal entry into a shared, protected space.
- The **pedestrian path** leading to the viewpoint has been **secured and made accessible to people with reduced mobility**.
- The **parking area** has been redesigned and partially **re-naturalized** to minimize artificial surfaces. It now accommodates **60 cars, 7 motorhomes, and buses**. Bicycle racks and eco-friendly dry toilets have also been installed.



OBSERVING

RELIGIOUS HERITAGE

In the heart of the region, discover remarkable religious sites, true treasures of the local heritage. Highlights include:

- Landévennec Abbey
- Notre-Dame de Rocamadour Chapel
- The Parish Close of Argol

Let's take you on a journey through these historic landmarks!



THE RUMENGOL SANCTUARY

Near the **Petite Cité de Caractère** of Le Faou, at the entrance to the Crozon Peninsula, the Rumengol Sanctuary is a **jewel of religious heritage** in Finistère.

The **Notre-Dame Church**, built in the 16th century on an ancient **Druidic worship site**, remains a major pilgrimage site in Brittany. **A must-visit!**



NOTRE-DAME DE ROCAMADOUR CHAPEL

A chapel on the water! Built on the **Camaret-sur-Mer spit**, right at the foot of the Vauban Tower, the **Notre-Dame de Rocamadour Chapel** (which means «**rock on the water**») is sometimes transformed into an **island** during high tides.

The oldest part of the chapel dates back to **1527**, though it has undergone multiple restorations and expansions, notably after a **fire in 1910** that also destroyed its original furnishings. Did you notice its **decapitated bell tower**? It is said to have been **struck by an English cannonball in 1694**.





THE FORMER LANDÉVENNec ABBEY

This is the oldest known monastic foundation in Brittany! The former Landévennec Abbey is believed to have been founded in the late 5th century by Saint Guénolé and his 11 disciples.

Today, it is an exceptional archaeological site, located next to the new abbey and museum. The museum showcases 13 centuries of Breton history, revealed through 25 years of archaeological excavations.



THE OLD VILLAGE OF QUIMERC'H

(Inland from the Crozon Peninsula)

The old village of Quimerc'h still holds traces of its parish history. The church was abandoned in the 19th century, when the parish seat was relocated a few kilometers away. Now, nature has reclaimed the site, and only birdsong breaks the silence. It's easy to imagine stepping back 300 years, when daily life revolved around the church.



LANVÉOC



THE PARISH CLOSE OF ARGOL

The only parish close on the Crozon Peninsula is well worth a visit! It stands among the greatest religious heritage sites in the region.

Visitors enter through a majestic triumphal arch, built in the mid-17th century. This leads to the Saint-Pierre and Saint-Paul Church, the calvary, the cemetery, and the ossuary.

COUNTING

THE MEGALITHS

Nestled in the heart of nature, the megaliths bear witness to an ancient past, linked to astronomical alignments and ancestral beliefs.

Here, time seems to stand still. You'll be captivated by the **spirit of the place**. But why were these stones arranged in such patterns? **How did these menhirs get here?** What is their meaning? The mystery awaits you on-site.

Here's a clue:

- The **alignment** references the **Pleiades constellation**.
- «Lagad Yar» in Breton means «the hen's eye.»
- This **monument** was built approximately 4,500 years ago!



THE «PENTY»

AND VILLAGES

Discover the charm of our picturesque villages!

Each commune is home to traditional houses, reflecting the lifestyles of the past.

If you book in advance, you might have the chance to rent a «penty» (a traditional Breton cottage) in one of the villages of the Crozon Peninsula.

This unique experience lets you immerse yourself in the life of a bygone era, where the architecture has preserved its authentic character. These stone houses with blue shutters were built close together in villages such as Mènesguen, Kerroux, and Rostudel (at Cap de la Chèvre).

To withstand the elements, their thick stone walls provided insulation, and their small windows helped protect against strong winds.



MEET THE ARTISTS

CAMARET, CITY OF ARTISTS

In Camaret-sur-Mer, just a stone's throw from the marina, there is a place that seems frozen in time, inviting visitors to stroll and forget the passing hours.

The artists' quarter is home to no fewer than 25 workshops! Wandering from gallery to gallery, you'll discover a variety of styles and inspirations. The area itself is a dreamlike setting, with its narrow, quiet pedestrian streets, blue shutters, and colorful or plant-covered facades. It almost feels like being on a small island. It's a place where getting lost is a pleasure, full of unexpected surprises. Just a few steps away, the marina and its café terraces offer the perfect opportunity to extend the moment.





A PRESERVED

NATURAL LANDSCAPE

THE FORESTS

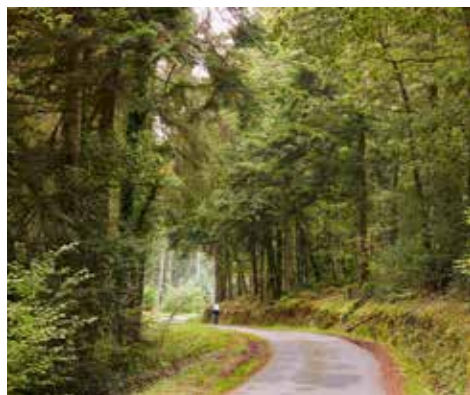
OF ARGOL, LANDEVENNEC, AND CRANOÙ



The three forests of the Crozon Peninsula and Aulne Maritime are ideal for walking, relaxation, and outdoor activities. The Landévennec Forest is perhaps the most unique, as it runs along part of the Brest harbor, following the Aulne River up to the Térénez Bridge, offering breathtaking views of the sea.

You can find a map of the region's forests at our tourist offices.

Among the friendly wildlife you may encounter are the red squirrel, leaping through the treetops, and the Quimper snail, a protected species found only in western Brittany and Galicia.







CAP DE LA CHÈVRE

BREATHTAKING PANORAMAS

LE KADOR - MORGAT





THE MOST BEAUTIFUL SUNSETS



POINTE DE PEN-HIR

The sun rises in the east and sets in the west. If you check the map, that means you should head to Morgat in the morning... and to Pointe de Pen-Hir in Camaret in the evening to catch a spectacular sunset.



POINTE AND ANSE DE DINAN





THE AULNE MARITIME





THE TÉRÉNEZ BRIDGE





THE ABER



THE BREST GOULET





Anse de Dinan –
Kerloc'h, Kersiguénou,
and Goulien beaches
(Goulien Beach is
supervised in July and
August).



THE SEA

LEARN TO SAIL

Sail in the Bay of Douarnenez (Morgat, Telgruc-sur-Mer), along the Aulne River, in the Brest harbor, or from Camaret-sur-Mer.

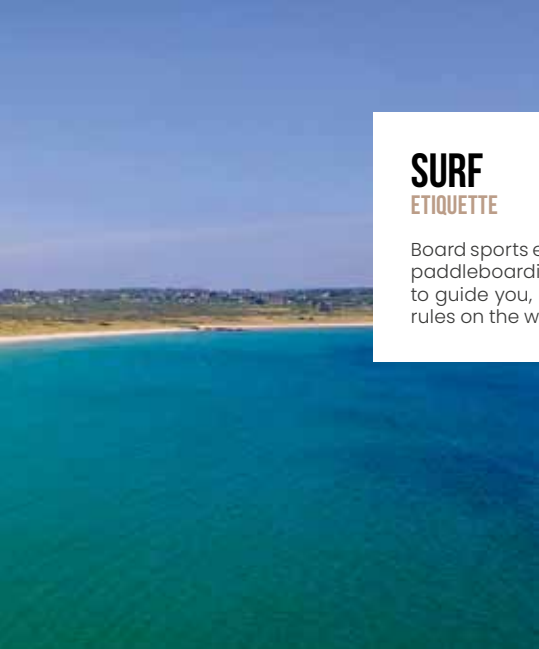
Whether you're a freshwater or saltwater sailor, you can enjoy a variety of experiences on the water with passionate professionals. Set out at sunrise or as the light fades, navigating through the Bay of Douarnenez, the Brest harbor, or the winding Aulne River. Take part in the maneuvers—who knows, your stay might just spark a lifelong passion for sailing!

Find all the best addresses on pages 55, 56 and 57.



DISCOVER OUR
MOST BEAUTIFUL
BEACHES





SURF ETIQUETTE

Board sports encompass a wide range of activities, including surfing, paddleboarding, windsurfing, and wing foiling. Surf schools are there to guide you, promoting a shared respect for the waves and safety rules on the water.



WHAT IS A «BAÏNE»?

Baïnes are deceptively calm water channels that can create strong currents pulling swimmers out to sea.

WHAT SHOULD YOU DO?

- Always respect swimming bans.
- If caught in a baine current, don't try to swim against it—let yourself be carried along and exit by swimming sideways.
- As the tide rises, avoid staying on sandbanks to prevent being swept into deeper waters by the current.



A TRIP TO OUESSANT ISLAND

Setting off for an island—what an exciting adventure!

Ferry companies and their crews welcome you aboard for a remarkable crossing from the port of Camaret-sur-Mer in summer. As you sail, the landscape unfolds: behind you, the Golden Tower of Vauban in its maritime setting, to your left the Pointe du Gouin, and ahead, the Petit Minou lighthouse. Then comes Pointe Saint-Mathieu, perched on its rocky spur, marking the gateway to the Atlantic Ocean. After a 90-minute journey, the island of Ouessant appears on the horizon. Stepping ashore, time seems to stand still. The unique architecture, endless ocean views, the village of Lampaul, and traditional museums make for an unforgettable experience. Ready for the journey?

Find all the best addresses on pages 57 and 58.



PROTECTING THE DUNES

Some of the Crozon Peninsula's most beautiful landscapes are shaped by sand dunes, such as those at Aber, Goulien, La Palue, and Lostmarc'h. These ecosystems are alive yet fragile. Wooden fences are often placed to protect the vegetation from trampling and to preserve quiet spaces for birds.

And that delightful scent filling the dunes in spring? That's the burnet rose!



RIVERS



SAILING ON THE AULNE

Flowing through the heart of the Armorique Regional Natural Park, the Aulne Maritime is one of Brittany's most stunning rivers. It empties into the Brest harbor, offering breathtaking landscapes along its banks.

This unique and intimate setting is perfect for hikes and leisurely walks. Alongside its wild coastline and preserved nature, heritage lovers will delight in exploring the charming Petite Cité de Caractère of Le Faou, the Abbey of Landévennec, and the rich religious heritage scattered throughout this gateway to the Crozon Peninsula.





MORGAT



LE FRET
LE FAOU



LIFE ON THE DOCKS

LANVÉOC



CAMARET/MER



PRACTICAL INFORMATION



GETTING AROUND DURING YOUR STAY

For greater mobility, our information centers can help you find transportation options, including buses, taxi shuttles, bike rentals, and carpooling.

WHY NOT CARPOOL?

Carpooling is a great way to travel! Many drivers are waiting for you on Ouestgo. Visit www.ouestgo.fr for more information.

CYCLING: AN ECO-FRIENDLY CHOICE

The véloroute – Greenway V046 follows the path of an old railway line connecting Camaret to Carhaix, offering a scenic cycling route.

Electric Bikes (E-bikes)

The region's landscape is ideal for electric biking. Leave your car behind and opt for a more sustainable mode of transport! You can cover up to 9 km in about 20 minutes.



Rental options include:

- Ino2V (Argol, Camaret, Crozon, Lanvéoc, Landévennec, Le Faou, Rosnoën, Telgruc, and soon Pont-de-Buis)
- Crapato (Morgat – seasonal) – www.bastiensimon.free.fr/crapato
- Cycles du Bout du Monde (Crozon) – www.cycles-du-bout-du-monde.fr
- Roscanveloc (Roscanvel) – www.roscanveloc.com
- Aber Bikes – www.aberbikes.fr

Cycling Map of Crozon

Many tourist sites and facilities have dedicated bike parking, and town centers are well-equipped.

For route planning, visit www.geovelo.fr.



+ info



TOWN HALLS

ARGOL - 29560

Place des Anciens Combattants
Tél. 02 98 73 54 02
mairie@argol.fr - www.argol.fr

CAMARET-SUR-MER - 29570

Place d'Estienne D'Orves - Tél. 02 98 27 94 22
contactmairie@camaretsurmer.fr
www.camaret-sur-mer.fr

CROZON - 29160

Place Léon Blum - Tél. 02 98 27 10 28
www.crozon.bzh

LANDÉVENNEC - 29560

Place de la Mairie - Tél. 02 98 27 72 65
mairie.landevennec@wanadoo.fr
www.landevennec.fr

LANVÉOC - 29160

4 rue de Tal-ar-groas - Tél. 02 98 27 50 21
mairie@lanveoc.com - www.lanveoc.com

LE FAOU - 29590

Place aux Foires - Tél. 02 98 81 90 44
accueil@mairielefaou.fr - www.lefaou.bzh

PONT-DE-BUIS LÈS QUIMERC'H - 29590

Esplanade du général de Gaulle
Tél. 02 98 73 04 38
accueil-mairie@pontdebuislesquimerch.fr
www.pontdebuislesquimerch.fr

ROSCANVEL - 29570

Rue de la Mairie - Tél. 02 98 27 48 51
mairie@roscanvel.fr - www.roscanvel.fr

ROSNOËN - 29590

Place de l'Église - Tél. 02 98 81 91 97
communication@mairiederosnoen.fr
www.mairiederosnoen.fr

TELGRUC-SUR-MER - 29590

4 Rue du Ménéz Hom - Tél. 02 98 27 73 65
mairie@telgruc-sur-mer.bzh
www.telgruc-sur-mer.bzh

MUNICIPAL LIBRARIES

ARGOL

1 Route du Moulin - Tél. 02 98 73 54 02
argol.bibliotheque@gmail.com

CAMARET-SUR-MER

Rue de la Victoire - Tél. 02 98 27 86 28
bibliotheque@camaretsurmer.fr

CROZON

Place de la Gare - Tél. 02 98 27 11 74
bibliotheque@crozon.bzh

LANDÉVENNEC

Derrière la mairie - Tél. 02 98 27 72 65
biblio.landevennec@gmail.com

LANVÉOC

Place de la Mairie - Tél. 02 98 27 57 90
bibliotheque@lanveoc.com



LE FAOU

Route de Térénez - Tél. 02 98 81 01 01
bibliotheque@mairielefaou.fr

PONT-DE-BUIS LÈS QUIMERC'H

Rue Albert Louppe - Tél. 02 98 26 94 83
mediatheque@pontdebuislesquimerch.fr

ROSCANVEL

8 rue de la Mairie - Tél. 02 98 27 42 99
bibliotheque@roscanvel.fr

ROSNOËN

2 Place de l'Église - Tél. 02 98 81 91 97
lemondedulivreetdujeu@mairiederosnoen.fr

TELGRUC-SUR-MER

10 Rue Feunteun Ven - Tél. 02 98 27 32 72
bibliotelgruc@orange.fr



MARINAS & PORTS

A STOPOVER ON THE PENINSULA!

The coastline of the Crozon Peninsula offers sailors the perfect opportunity for a cruise in a preserved natural setting at the edge of Finistère.

SAILING RESPONSIBLY!

Eco-navigation is a sustainable approach aimed at promoting environmentally friendly solutions for sailors, boat life cycles, and port management. Whether at the marina, at sea, or fishing, adopting responsible and mindful habits helps preserve marine ecosystems.

CAMARET-SUR-MER PORT

A marina at the heart of the town.
Contact capitainerie :
quai Toudouze - 02 98 27 89 31
capitainerie@camaretsurmer.fr

MORGAT & LE FRET PORTS

Contact capitainerie :
02 98 27 01 97
ports@crozon.bzh

SMALL PORTS & MOORINGS

Rosnoën : 02 98 27 24 76
Landévennec : 02 98 27 72 65
Lanvéoc : 06 40 66 89 40
Roscanvel : 02 98 27 48 51



EMERGENCY NUMBERS

- **European Emergency Number:** 112
- **Medical Emergency (SAMU):** 15
- **Police / Gendarmerie :** 17
- **Firefighters:** 18
- **On-call Pharmacy:** 3237
- **Poison Control Center:** 02 99 59 22 22
- **Sea Rescue (CROSS CORSEN):** 196
- **Brest University Hospital (CHU Brest):**
02 98 22 33 33
- **Pediatric Emergency (Hôpital Morvan, Brest):** 02 98 44 55 55
- **Military Hospital Emergency (Brest):**
02 98 43 72 33
- **Keraudren Emergency (Brest):** 02 98 34 29 27



MARITIME SERVICES & WEATHER

MARITIME AFFAIRS - LE GUILVINEC

37 Rue de la Marine
29730 Le Guilvinec
Tél. 02 98 76 59 47

CUSTOMS - BREST

Brest : Tél. 02 98 33 97 14

CROSS CORSEN

Tél. 196 ou 02 98 89 31 31
Canal VHF 16

MARINE WEATHER REPORTS

Régional: Tél. 08 36 68 00 00
Departures: Tél. 08 36 68 02 29
Coastal: Tél. 08 36 68 08 29
Ocean Surf Report (24H/7)
Dealy Surf Report: Tél. 08 36 68 13 60
Marine Weather: Tél. 08 36 68 08 08

COASTAL MOORINGS

Anse de Dinan - Anse de Pen-Hir
Camerós - L'Aber - Landévennec
Le Fret - Roscanvel - Saint-Hernot





SHORE FISHING

A few tips to safely enjoy the high tides

- Check tide times and coefficients before heading to the seashore.
- Keep track of tide schedules using the indicators available at the Tourist Office or on the website www.crozon-tourisme.bzh/meteo-marees

Do not go out alone and inform your relatives of your location and planned return time.

Take a fully charged phone with you to call emergency services at 196 if needed.

At high tide, avoid getting too close to the water's edge.

At low tide, maintain a visual landmark on the shoreline and set an alarm to leave the beach at least 30 minutes before the lowest tide point.

- Check the water quality in the area where you plan to fish.
- Make sure that shore fishing is allowed in that area.



HIGH TIDE DATES IN 2025



- Friday, February 28 – Monday, March 3
(coefficient 111)
- Saturday, March 29 – Tuesday, April 1
(coefficient 114)
- Sunday, April 27 – Wednesday, April 30
(coefficient 108)
- Monday, September 8 – Thursday, September 11
(coefficient 106)
- Tuesday, October 7 – Friday, October 10
(coefficient 110)
- Wednesday, November 5 – Thursday, November 7
(coefficient 106)

GR 34

& HIKING TRAILS



MAJOR STAGES OF THE CROZON PENINSULA — AULNE MARITIME TOUR

ROUTE DURATION: 7 DAYS — 175 KM

DAY 1: FROM LE FAOU TO LANDÉVENNEC 19 km / 5h45

Discover timber-framed houses with slate roofs, sunken lanes, the Térénez Bridge, the winding Aulne River, and the historic military boat cemetery. The Aulne Maritime region is rich in heritage.

DAY 2: FROM LANDÉVENNEC TO LANVÉOC 20 km / 5h45

Pass through the stunning Landévennec State Forest and the Sillon des Anglais, a geological treasure and a sanctuary for local wildlife and flora.

DAY 3: FROM LANVÉOC TO CAMARET-SUR-MER VIA ROSCANVEL 31 km / 8h15

Explore the Roscanvel Peninsula and its military history: forts, batteries, watchtowers... while enjoying views of Brest Bay.

Note: A shorter variant reduces the route from 31 km to 16 km.

DAY 4: FROM CAMARET TO MORGAT 26 km / 7h

Marvel at the Tas de Pois rock formations at Pen Hir Point, the dramatic Dinan Headland, the artists' quarter, the famous Vauban Tower, and the Lagadjar megalithic alignments.

DAY 5: FROM MORGAT TO MORGAT VIA CAP DE LA CHÈVRE 23 km / 6h00

Discover the wildest coastline in the region. Expect steep cliffs, panoramic views, renowned surf spots, hidden coves, crystal-clear waters, and traditional fishing villages. This section of the GR is rugged.

DAY 6: FROM MORGAT TO SAINT-NIC (PENTREZ) 23 km / 6h30

The journey continues along fine sandy beaches, passing Île de l'Aber, a protected site within a natural reserve.



The **FFRandonnée Finistère**, a non-profit association, is dedicated to creating, marking, maintaining, and promoting hiking trails in Finistère, thanks to hundreds of volunteers in partnership with local authorities.

Hiking guides and route maps are available at Tourist Offices and through FFRandonnée Finistère.

 www.finistere.ffrandonnee.fr

 **02 98 89 60 06**

 finistere@ffrandonnee.fr

PRACTICAL INFORMATION



The GR 34, also known as the «Sentier des Douaniers» (Customs Officers' Path), stretches over 2,000 km along the Brittany coastline. This scenic route offers breathtaking landscapes, alternating between rugged cliffs, sandy beaches, and charming fishing harbors.

The trail runs along the entire coastline of the Crozon Peninsula – Aulne Maritime, covering 120 km. The GR 37, on the other hand, ends in Camaret-sur-Mer.

To complete the Crozon Peninsula – Aulne Maritime Tour on foot, you'll follow the local GR trail, connecting Saint-Nic to the Térénez Bridge.

This itinerary takes approximately 7 days (175 km total).

With its diverse landscapes, mild maritime climate, and rich wildlife, this trek is an unforgettable experience for nature lovers.

DAY 7: FROM SAINT-NIC TO LE FAOU VIA MÉNEZ-HOM

36 km / 9h30

End your adventure by climbing the Ménez-Hom (330m), the highest point in the region, offering breathtaking 360° views. Then, cross the Térénez Bridge to reach the charming town of Le Faou.

«MaRando» –
The FFRandonnée App
Created by hiking enthusiasts
for hiking enthusiasts!



TRAIL MARKINGS

Types of routes

Correct direction

Turn left

Turn right

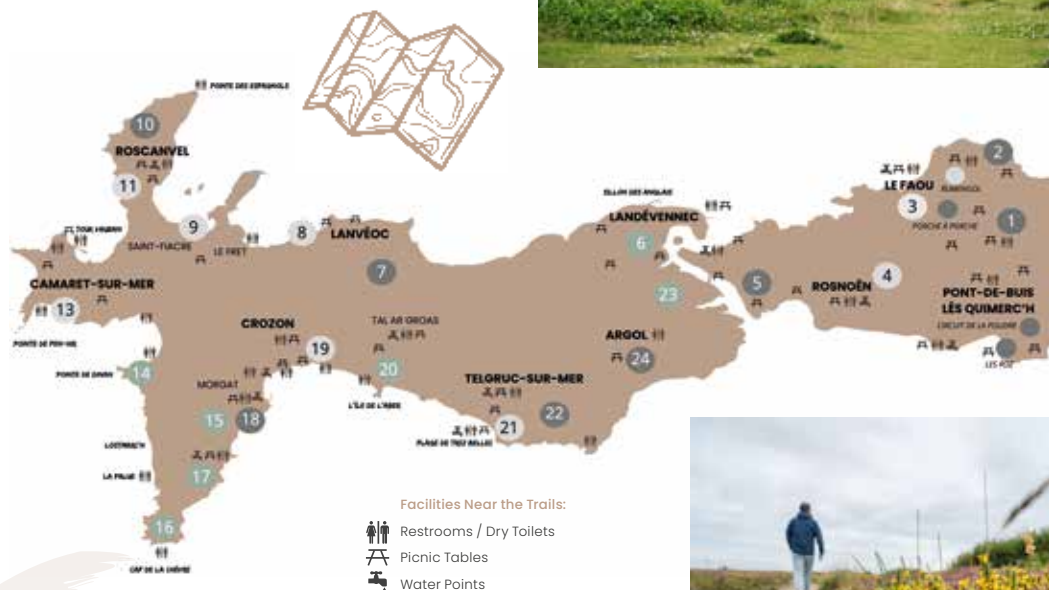
Wrong direction



Suricate allows you to report any issues encountered while hiking.

OUR HIKING TRAILS

For those who prefer walks and hiking trails, you'll be delighted. Our region has more than **30 circuits signposted** by the Fédération Française de Randonnée (French Hiking Federation) and passing through all the communes, allowing you to immerse yourself in the **beauty of our landscapes**.



VERY EASY

- 3 Petite Cité de Caractère / 4km / 1h30

EASY

- 4 The Radio Kimerc'h Circuit / 9km / 3h
- 8 The Brest Bay / 10 km / 3h20
- 9 The Saint-Fiacre Walk / 6.5 km / 2h10
- 11 The Fraternity Circuit / 9km / 3h
- 13 The Saint-Julien Circuit / 8km / 2h40
- 19 The Menhir Trail / 9km / 3h
- 21 The Menez Caon Trail / 9km / 3h
- The Small Rumengol Loop / 4km / 1h

MEDIUM

- 1 The Vieux Bourg Circuit / 13 km / 3h15
- 2 The Cranou Forest / 12.5 km / 3h10
- 5 The Wolf's Leap / 13 km / 3h45
- 7 The Poulmic Circuit / 11km / 3h
- 10 The Lord's Mill / 14km / 3h30
- 18 Ty ar C'hurê Walk / 8.5 km / 3h
- 22 To Trez Bellec Beach / 12km / 3h30
- 24 The C'héguet Circuit / 11.5 km / 3h50
- The Powder Circuit / 7km / 1h45
- The Roz Circuit / 6km / 1h30
- The Porch-to-Porch Circuit / 10km / 2h

DIFFICULT

- 6 The Landévennec Tour / 18 km / 4h30
- 12 The Camaret Tour / 18 km / 5h
- 14 The Dinan Headland / 14.5 km / 4h35
- 15 From the Bay to the Ocean / 16.5 km / 4h15
- 16 The Cap de la Chèvre Tour / 14 km / 3h30
- 17 The Saint-Nicolas Cove / 13km / 4h20
- 20 Towards Aber Island / 14 km / 4h30
- 23 The Maritime Aulne / 17 km / 5h30



THE PERFECT HIKER'S GEAR

- Proper hiking shoes
- High socks
- Sunscreen
- Sunglasses
- Water bottle
- Backpack
- Bag for waste
- First aid kit
- Hat
- Snack







Find all
our routes!



More guides and information
are available at the **Tourist
Offices** in the region.

0 2,5 5 km



- Greenway - V6
- Shared Road
- Cycle Path
- Start: Greenway
- Secondary Road (recommended bike routes)
- Planned Cycle Path

EASY

- 5 Fret / 13km / 2h / +157m
- VTT 2 Small Menez Luz Loop / 20,5km / 2h10 / +280m
- VTT 4 Cléguer Woods / 18km / 2h / +350m
- VTT 9 Roscanvel Tour / 14,5km / 1h30 / +220m
- VTT 11 Westward / 20km / 2h10 / +250m
- VTT 12 Trémet / 20km / 2h15 / +300m
- VTT 13 Dinan / 20km / 2h15 / +300m
- VTT 14 Rostudel / 21km / 2h15 / +350m
- VTT 15 Quézédé Woods / 4,5km / 0h30 / +60m
- VTT 16 Kerloc'h Pond / 8km / 1h / +100m

MEDIUM

- 1 Wind Circuit (Roscanvel) / 12km / 1h / +100m
- 2 Camaret Circuit / 29km / 1h30 / +397m
- 4 Cap de la Chèvre Circuit / 33km / 1h45 / +313m
- 6 Argol Circuit / 16km / 1h15 / +206m
- VTT 1 Tréboul Circuit / 20km / 2h15 / +300m
- VTT 3 Menez Luz Circuit / 33,5km / 3h15 / +520m
- VTT 8 Lanvéoc Circuit / 23,5km / 2h30 / +300m
- VTT 23 Radio Kimerc'h Circuit / 9km / 1h / +240m
- VTT 24 Vieux Bourg Circuit / 13km / 1h15 / +330m

DIFFICULT

- VTT 18 The Forest / 18,5km / 2h15 / +540m
- Multi-use hiking trails

TRAIL

CIRCUITS



Located between the Rade de Brest and Menez Hom, the Crozon Peninsula Aulne Maritime is full of treasures. Wherever you go, vast expanses of water stretch as far as the eye can see, breathtaking panoramas, and some of the most lush forests in Finistère. Set out to conquer this green lung, still unknown to the public. Your athletic mindset may be put to the test, but the reward will be worth it! Expect elevation changes, technical trails, authenticity, and who knows, maybe even a form of meditation?!



ROZ CIRCUIT

Starting from the village of Pont-de-Buis-lès-Quimerch, this beautiful circuit takes you along the trails bordering the Douffine and Aulne Maritime rivers. You'll alternate between ascents and descents, mostly in a forest atmosphere, with some very scenic single-track sections. A perfect circuit for a short-distance run or an introduction to trail running.

STARTING POINT: PONT-DE-BUIS-LÈS-QUIMERCH

- Distance: 5.9 km
- Elevation gain: 220 m
- Elevation loss: 220 m
- Min altitude: 2 m
- Max altitude: 89 m
- Duration (depending on pace): 40 min to 1h20
- Marking: Follow the yellow PR hiking markers
+ trail reminders



ARGOL CIRCUIT

Starting from the village of Argol, this loop allows for a long-distance run on rolling terrain without major difficulties. After an initial section through the Argol forest, you will reach the banks of the Aulne Maritime, following it to the Folgoat Chapel. You will then return to Argol via the Landévennec forest, alternating between paths and small country roads.

STARTING POINT: ARGOL

- Distance: 20.1 km
- Elevation gain: 370 m
- Elevation loss: 370 m
- Min altitude: 4 m
- Max altitude: 165 m
- Duration (depending on pace): 2h to 4h
- Marking: Follow the hiking or MTB markers
+ trail reminders





TOUR OF LANDÉVENNEC

CIRCUIT

Starting from the village of Landévennec, near the Saint Guénolé Abbey, this circuit offers a trail run with elevation changes, combining forested areas and coastal paths. The first 6 km follow the coastline on a wooded trail through the Landévennec state forest before heading inland, alternating between tracks and small roads. After passing the charming Folgoat Chapel, you will take a beautiful trail overlooking the Aulne Maritime before reaching the heights of Landévennec.

STARTING POINT: LANDÉVENNEC

- Distance: 18.4 km
- Elevation gain: 470 m
- Elevation loss: 270 m
- Min altitude: 5 m
- Max altitude: 110 m
- Duration (depending on pace): 1h50 to 3h40
- Marking: Follow the hiking or MTB markers + trail reminders



ARGOL - LANDÉVENNEC

CIRCUIT

Starting from either Argol or Landévennec, this route offers a long training run on varied terrain, with a mix of coastal trails and inland paths.

Starting from Argol, you will first climb up to the Argol forest before descending to the banks of the Aulne Maritime, which you will follow for over 10 km to reach the village of Landévennec. You will then run along the Rade de Brest on a wooded trail before returning to Argol through a more rural landscape, alternating between paths and small roads towards the end of the route.

STARTING POINT: ARGOL

- Distance: 35.7 km
- Elevation gain: 790 m
- Elevation loss: 790 m
- Min altitude: 4 m
- Max altitude: 165 m
- Duration (depending on pace): 3h45 to 7h30
- Marking: Follow the hiking or MTB markers + trail reminders





MARKETS

Morning markets unless otherwise specified.

MONDAY

Telgruc-sur-Mer

Summer farm market
(July-August) – 5 PM to 8 PM
Rozavern Cider House

Crozon

Seasonal farmers' market
Church Square

TUESDAY

Camaret-sur-Mer

General market
Charles de Gaulle Square
Summer market
(July-August) – Town Hall
Square and Saint-Thomas

Crozon

Farmers' market
Church Square

Morgat

Nighttime craft market
During "Mardis de Morgat"
events

Telgruc-sur-Mer

Food market
Church Square



WEDNESDAY



Crozon

Farmers' market
Church Square
General fair
(2nd and 4th Wednesday of
the month)
Church Square and town
center
Large summer market
(1st, 3rd, and 5th Wednesday,
July-August) – Morgat seafront



THURSDAY

Argol

Food market
Church Square

Crozon

Seasonal farmers' market
Church Square

FRIDAY

**Pont-de-buis-les-Quimerch'h
Market**

Place du 19 Mars 1962

Lanvéoc

Farmers' market
4 PM to 8 PM – Town Hall
Square

Crozon

Farmers' market
Church Square

Telgruc-sur-Mer

Food market
Church Square

SATURDAY

Le Faou

Flavors market
Place aux Foires (October to June)
Quai Prosper de Quélen (summer)

Crozon

Farmers' market
Church Square

Tal ar Groas

Small food market
Bakery parking lot

SUNDAY

Camaret-sur-Mer

Arts and crafts market
3 times per summer
On the docks

Crozon

Farmers' market
Church Square



SEAFOOD

COOKING GUIDE

LOBSTERS

Place them in boiling, well-salted water. Cook for 20-25 minutes from the time the water returns to a boil.

LANGOUSTINES

Boil in well-salted water. Once they rise to the surface after the water returns to a boil, drain them.

EXTRA TIP:

Avoid overcrowding the pot; it's better to cook in batches.



SPIDER CRABS & BROWN CRABS

Place them in cold, well-salted water. Cook for 15-20 minutes from the time the water starts boiling.

EXTRA TIP:

If using boiling water, place the crab in the freezer for 20 minutes beforehand to prevent it from losing its legs.

WINKLES

Cook in boiling salted and peppered water. Add them once the water reaches a boil. Turn off the heat as soon as the water returns to a boil.

EXTRA TIP:

Let them cool in the cooking water for better flavor.



TRADITIONAL FAR

RECIPE

- Preheat the oven to 180°C (fan and grill) – 15 min.
- In a bowl, mix flour, sugar, and a pinch of salt.
- Add the four whole eggs and mix well with a whisk.
- Gradually add the milk while stirring.
- Butter an oval baking dish, pour in the batter.
- Bake for 40 min.
- Let cool slightly before serving.

INGREDIENTS
(SERVES 8):
1 knob of butter
1 pinch of salt
100 g sugar
125 g flour
4 eggs
50 cl milk (room temperature)



CRÊPE BATTER

RECIPE

- Place the flour in a bowl.
- Add the eggs, sugar, oil, and butter.
- Mix gently with a whisk, gradually adding the milk. The batter should be liquid but slightly thick.
- Heat a non-stick pan, lightly oil with a paper towel. Pour a ladle of batter, spread evenly, and cook until golden before flipping. Repeat for all crêpes.

INGREDIENTS
(MAKES 20 CRÊPES):
65 g melted butter
2.5 tbsp sunflower oil
4 tbsp sugar
400 g flour
4 eggs
80 cl milk



ADDRESS BOOK

GUIDED OUTINGS AND HIKES (LAND / SEA)

54

NAUTICAL CENTERS

55

BOAT TRIPS

56

MARITIME CROSSINGS

57

SURFING AND WATERSPORTS

59

EQUESTRIAN CENTER

60

BIKE, KAYAK, AND BOAT RENTALS

60

MUSEUMS

61

LEISURE AND SPORTS ACTIVITIES

66

WELLNESS

68

AMUSEMENT PARKS

69

RESTAURANTS / CATERING SERVICES

70

LOCAL PRODUCERS

72

SHOPS

76

CINEMAS

79

GUIDED OUTINGS AND HIKES (LAND AND SEA)



SERGE KERGOAT

Discover the Birds of the Peninsula

2 rue de liège • 29570 CAMARET/MER
06 60 29 31 17 • 02 98 27 89 85 • www.zoizo.fr

The aim of these 2.5-hour walks covering about 3 km is to introduce you to the resident and nesting birds of the Crozon Peninsula.

The dunes of Aber, the heathlands of Penhad, and the ports of Fret and Camaret are ideal for observing coastal and sea birds.

This informative outing is enhanced by small anecdotes, ensuring an enjoyable experience.

Prices: Contact for details

Opening: Monday to Friday

Océ'ÂNE

Hiking with a Pack Donkey, Farm, and Natural Camping Area

1 impasse de Kérael • 29160 LANVÉOC
06 32 24 86 19 • contact@oceane-crozon.net
www.oceane-crozon.net

Discover a half-day to full-day hike with a donkey companion, who will carry your picnic and tired children.

During school holidays (Easter and Summer) and by reservation only, family activity: «Little Donkey Handler» is available on Wednesdays from 10-12h and 14:30-16:30, and Fridays from 10-12h: grooming, care, and a small walk in the countryside.

1 donkey/family, with a maximum of 4 to 5 families.

Prices: Donkey rental: €35 for half-day and €65 for a full day. Family activity: €40.

Opening: Year-round, activities by reservation via SMS or phone.

Farm and picnic area open year-round (except for supervised sessions).

Camping open from April 1 to September 30.



CHEMINS DE TRAVERSE - RIBIN HA DIRIBIN

Fauna and Flora, Heritage Walks

06 66 07 59 77 • herrouroger@gmail.com • www.herrouroger.wixsite.com/monsie

Get away and explore all the environments of the peninsula, cliffs, rocky shorelines. Listen, touch, and smell. Roger Herrou, nature guide and animator.

Outings possible year-round on themes and locations chosen by participants:

1. Marine and terrestrial fauna and flora
2. Tidal phenomena, intertidal zone, Beaufort scale, clouds
3. Edible and medicinal plants
4. Nature and History: Neolithic (dolmen, menhir, oppidum, plants used in that era) and Romans (oppidum, garum, purple dye)
5. Marine animals and plants (food, medicine, other uses)
6. Toponymy

Prices: €8 per person, €5 for 8 to 12-year-olds. Group bookings available. Outings organized during school holidays.

MAISON DES MINÉRAUX - ANIMATIONS PLURIELLES SUR LE TERRITOIRE

Geological and Nature Walks, Storytelling, Crafting, Sound Walks...

Saint-Hernot, route du Cap de la Chèvre • 29160 CROZON • 02 98 27 19 73
contact@maison-des-mineraux.org • www.maison-des-mineraux.org

Explore nature with activities designed for everyone, adults and children! Choose from guided walks to explore with a passionate guide or enjoy self-guided sound walks. Observe, touch, smell, and listen... Each step reveals a hidden world ready to tell its story. A sensory and enriching immersion not to be missed!

Duration: 2-3 hours depending on the walk.

Reservation required. Check the detailed schedule on the website.



NAUTICAL CENTERS



CENTRE NAUTIQUE DE ROSCANVEL

Moussaillons/Teens/Adults Sailing Courses on Dinghies, Catamarans, Wing Foils, Windsurfing

Le Fortin, Port • 29570 ROSCANVEL • 02 98 27 41 59
cnroscanvel29@gmail.com

www.centrenautiquederoscanvel.fr

The CNR is located in the exceptional setting of the Brest Rade, providing a varied and safe water area, ideal for learning to sail, practice wing foil, or windsurfing.

It also offers a glide spot in the Anse de Quélerin. For beginners or those looking to improve their skills, CNR provides courses, private lessons, and rentals for all ages (from 5 years old).

Prices: Check the website for details on rates and packages.

Opening: April to October.



PRESQU'ÎLE AVENTURES TELGRUC

Nautical and Land Activities & Group Accommodation



31 plage de Trez Bellec • 29560 TELGRUC/MER
 02 98 73 30 16 • osez@presquile-aventures.bzh
www.presquile-aventures.bzh

In a breathtaking landscape, Trez Bellec beach offers various water and land activities.

Rentals or courses (5 half-days), available for individuals, families, or groups. Activities include Sailing, Kayak, Sand Yachting, Paddleboarding, Climbing, Archery, and Coasteering.

Prices: Available upon request

Opening: Year-round.



BASE NAUTIQUE DE PEN-HIR

Nautical Activities: Optimist Sailing, Sailboat Outings, Kayak



Facing the Rocamadour Chapel
 29570 CAMARET/MER

02 98 27 93 14 • reception-camaret@apas.asso.fr
www.apasbtp-villagesvacances.fr

Located in the heart of the Crozon Peninsula, the Pen-Hir Nautical Base offers a spectacular setting for water sports enthusiasts from 7 years old, including sailing, kayaking, and various stages.

Prices: Week-long course (5 sessions of 3 hours) at a flat rate of €180 per person.

Discounts from the second course at €150 per person.

Family package for kayaking and sailboat outings from €25 per person.

Opening: During school holidays from April to October.

SEA OUTINGS



BREIZH PÊCHE 29

Sport Fishing at Sea

06 15 41 16 49 • breizh.peche.29@live.fr

Sport fishing trips from Morgat with a state-certified fishing guide, targeting various species.

BOAT

Sea fishing trip (5 hours)

(3 people maximum)

Bluefin tuna (1-4 people)

SHORE

Guiding at sea for the day (~10 hours)

(3 people maximum)

Guiding for half-day at sea (~5 hours)

Prices: €200 to €1000, contact for details.

Hours: 8 AM to 6 PM



CATAVOILE29

Sea Outings

Quai Kador • 29160 CROZON • 06 69 18 07 76

contact@catavoile29.bzh • www.catavoile29.bzh

Explore the Crozon Peninsula from a new perspective with our catamaran outings, perfect for admiring stunning landscapes and secret coves.

We also offer boat rentals for exploring the coast, swimming, and enjoying the tranquility of the sea.



IROISE SPORTFISHING ADVENTURES

Sport Fishing at Sea

06 10 57 35 40 • contact@iroise-sport-fishing.fr

www.iroise-sport-fishing.fr

With a certified guide, discover sport fishing in the unique setting of the Iroise Sea. Embark for a full day, half-day, or with family and friends for a customized experience aboard a rigid inflatable boat.

Prices: Contact for details





VEGETTES SIRÈNES

Commented Sea Trips

Quai Kador • 29160 CROZON-MORGAT

29 Quai Gustave Toudouze • 29570 CAMARET/MER

06 60 93 97 05 • contact@sirenes.bzh • www.sirenes.bzh

Discover the Crozon Peninsula from a different angle. From Morgat to Roscanvel via Camaret, take part in one of our five waterway tours to admire the peninsula's maritime treasures.

Prices: From €18 (adult rate)

Opening: April - May - June - September: Sunday to Friday, closed on Saturday.

July - August: Open daily at Morgat, closed on Saturdays in Camaret.



MARITIME CROSSINGS



BREST OUEST COMPAGNIE MARITIME

Sea Links and Cruises

Port du Fret • 29160 LE FRET

07 78 37 03 23 • lebrestoa@gmail.com

www.lebrestoa.com

Take the Brestoa to cross the Brest Rade and reach Brest in 30 minutes!

Departure from Port du Fret in July and August.

Prices: From €18.50 to €72 per adult

Opening: April to September: 9:30 AM to 12:30 PM and 2 PM to 5:30 PM



FINIST'MER

Maritime Company

Quai Thépany

29570 CAMARET/MER • 02 98 89 05 95

contact@finist-mer.fr • www.finist-mer.fr

Departing from Camaret, Le Conquet, or Lanildut, embark on a boat to Ouessant, Molène, or the Isle of Sein.

Prices: Round trip from €20

Opening: May to September



© Gilles Eusa

COMPAGNIE MARITIME BREIZHGO PENN AR BED

Maritime Links and Cruises

1st Pier, Port de Commerce • 29200 BREST

Quai Tephany • 29570 CAMARET/MER

Ouessant/Molène 02 98 80 80 80

SEIN 02 98 70 70 70

contact@pennarbed.breizhgo.bzh

www.pennarbed.breizhgo.bzh

Embark on one of our 6 spacious and comfortable vessels for a trip to the Iroise Sea islands: Ouessant, Molène, and Sein.

Prices: Check the website for details

Opening: Year-round



SAILCOOP

Sailing Maritime Links

Triporteur devant la librairie Albertine,

19 Av. du Dr Pierre Nicolas • 29900 CONCARNEAU

02 57 62 10 19 • contact@voilasailcoop.fr

www.voilalesglenan.com

Sailcoop invites you on a sailing shuttle for a unique experience aboard a 61-foot catamaran.

Prices: €59 (adult) / €50 (reduced)

Opening: April to October 2025



CONCARNEAU & BEG MEIL

LES GLÉNAN

2 DÉPARTS PAR JOUR

1H30 DE TRAVERSÉE À LA VOILE
4H30 SUR L'ÎLE

35 à 59 € Aller≈Retour

CHOISISSEZ LE VENT
POUR ALLER AUX GLÉNAN





RÉSERVATION & PRIVATISATION

www.voilalesglenan.com

& 02 57 62 10 19

SURFING AND BOARD SPORTS



LOVE YOGA SURF

Yoga Surf Camp, group and private lessons, equipment rental.

Plage de la Palue and Kersiguenou • 29160 CROZON
06 73 44 08 84 • loveyogasurf@gmail.com
www.love-yoga-surf.com

At Love Yoga Surf, we ride the waves and practice yoga with friends, family, and sometimes even in English. Whether for a single lesson, a course, or a full week of Yoga Surf Camp, join us for a revitalizing experience of sharing and fun. Sharing these moments of grace with everyone is exhilarating. That's why I specialize in Surf Health and Handi Surf.

As a Surf and Yoga instructor, my goal is to make you independent in a safe and structured environment.

For more information, visit www.love-yoga-surf.com.
Open: all year round.



MAGNET SURF SCHOOL

Surf lessons and equipment rental

18 Bd de Pralognan la Vanoise
29160 CROZON • 06 76 23 88 72

contact@magnetsurf.com • www.magnetsurf.com

Want to learn or improve your surfing skills in a safe and fun way?

Hop in the van and let's go for a half-day surf trip! With his extensive teaching experience, Guillaume will help you progress in no time. Magnet Surf offers: session photos, premium boards and wetsuits, and beaches suited to your skill level and weather conditions.

Lots of laughs with family or friends!

If you're already independent, Magnet Surf also rents high-quality boards and wetsuits.

Visit our website and social media -

Prices: from €19

Open: Lessons from April to November

Rental: all year round, 8 AM - 7:30 PM



SURFING SARDINE

Surf lessons, discovery sessions, courses, group and private lessons, year-round lessons

1 boulevard de la France Libre • 29160 CROZON

06 50 22 14 59 • contact@surfing-sardine.fr

www.surfing-sardine.fr

Surfing Sardine offers surf lessons from April to October, available per session or as part of a course, in a group or private setting. Our teaching approach is adapted to all levels, making learning about the ocean fun and ensuring that surfing is always a pleasure. Equipment rental is also available. Suitable for ages 6 to 99!

Prices: from €35 (discovery session) to €160 (5-session course), equipment included.

Open: April to October. July-August: 2 PM - 7 PM, off-season by appointment.

OCEAN BAY

Towed buoy rides, surfing, rentals, wing & foil

06 61 92 64 35 • amaury@oceanbay.fr • www.oceanbay.fr

Goulien Beach: Join us directly at the surf spot between the campsite and the beach. We offer a wide range of surfboards, wetsuits, kayaks, and stand-up paddles adapted to weather conditions and your desires.

Morgat Beach: Guaranteed laughter and thrills between the port and Morgat Beach, Quai Kador. Towed buoy sessions are available for individuals and groups from 8 years old.

Wing & Foil School: Discover new gliding sensations!

Opening hours: - Goulien Beach reception: July 1 - August 31, 10 AM - 12:30 PM & 2 PM - 7 PM

- Quai Kador in Morgat reception: July 1 - August 31, 2 PM - 6 PM

By reservation all year round: 06 61 92 64 35 • www.oceanbay.fr

EQUESTRIAN CENTER



NEISCAOUEN EQUESTRIAN FARM

Horseback riding

29160 LANDÉVENNEC • 02 98 27 37 11

genevieve.costiou@wanadoo.fr

www.ferme-equestre-neiscaouen-landevennec.fr

Equestrian center and pony club from 2 years old. Beginner to advanced lessons in an enchanting setting. Indoor arena and hiking trails from 2 hours to several days. Riding exams available.

BIKE, KAYAK, AND BOAT RENTALS



ABER BIKES

Bike and e-bike rental and delivery

Quai du Fret • 29160 CROZON • 07 71 64 00 75

aberbikes@gmail.com • www.aberbikes.fr

Rent bikes and e-bikes from our shop at the port of Fret or have them delivered directly to your vacation spot (Crozon-Morgat, Camaret-sur-Mer, Telgruc-sur-Mer, Landévennec, Argol).

Discover our wide range of bikes and accessories (baby seats, saddlebags, trailers...) along with recommended routes for stunning rides through the peninsula's greenways and trails.

Info & booking: www.aberbikes.fr



CYCLES DU BOUT DU MONDE

Shop, rentals, sales, and repairs

6 bd Pierre Mendès France • 29160 CROZON

02 98 23 68 60

cycles-du-bout-du-monde@orange.fr

www.cycles-du-bout-du-monde.fr

Exploring the Crozon Peninsula is a must in Brittany! We offer bike rentals and deliveries, classic or electric, for adults and children, along with accessories (trailers for kids and pets, baby seats, baskets, etc.).

Prices: from €15 to €45

Open all year round.

Hours: September to June: Tuesday to Saturday, 9:30 AM - 12 PM & 2 PM - 7 PM

July 1 - August 31: Monday to Saturday, 9:30 AM - 1 PM & 2 PM - 7 PM; Sunday, 10 AM - 1 PM & 6 PM - 7 PM (for returns).

CRAPATO BICYCLO

Bike Rental - Hybrid Bikes & Mountain Bikes

6 rue de la Fontaine • 29160 CROZON

06 88 71 72 22 • dkerdreux@yahoo.fr

www.crapato.fr

Hybrid and mountain bike rentals - child seats and bike trailers available.

Prices: Please contact us.

Opening period: April to September.

CRAPATO BICYCLO

Kayak Rental (Single, Double, Triple)

Beach hut at Morgat Beach

Elasto trampoline • 29160 CROZON-MORGAT

06 88 71 72 22 • dkerdreux@yahoo.fr

www.crapato.fr

Kayaks launched directly into the water, life jackets, wetsuits, and waterproof containers provided. Orientation and safety instructions before departure.

Prices: Please contact us.

Opening period: April to September.



ROSCANVEL NAUTICAL CENTER

Rental of single, double, and triple kayaks, paddleboards, dinghies, and catamarans

Le Fortin, Port • 29570 ROSCANVEL

02 98 27 41 59 • cnroscanvel29@gmail.com

www.centrenautiquederoscanvel.fr

The bay of Roscanvel offers a sheltered and accessible waterway, perfect for all skill levels. Whether in a kayak, paddleboard, dinghy, or catamaran, discovering its mysterious islands and deserted beaches will delight adventurers. In summer, the center also organizes guided «Kayak & History» tours to explore one of the most beautiful natural harbors while paddling.

Prices: Kayak rentals start at €20 for 3 hours, including wetsuit and waterproof container. Full pricing details available on centrenautiquederoscanvel.fr.

Opening period: April, then July and August.

MUSEUMS

ANCIENNE ABBAYE DE LANDÉVENNEC

Guided Tours

Place Yann Landevenneg • 295660 LANDÉVENNEC
02 98 27 35 90

contact.museelandevenneg@gmail.com

www.musee-abbaye-landevenneg.fr

During school holidays, from Wednesday to Friday, guided tours of the museum and the archaeological site. Explore 1,500 years of history through the ruins of Brittany's first abbey with a guide.

Prices: +€2 in addition to the entrance fee.

Opening period: April 6 - June 30: daily from 10:30 AM to 1 PM / 2 PM to 6 PM. Closed on May 1.

July 1 - September 2: Monday to Friday from 10:30 AM to 7 PM, Saturday and Sunday from 10:30 AM to 1 PM / 2 PM to 7 PM.

September 22 - November 2: daily from 10:30 AM to 1 PM / 2 PM to 6 PM.





PARTEZ À LA DÉCOUVERTE

6 MUSÉES "SITES"

EN PRESQU'ÎLE DE CROZON
AULNE MARITIME

- 1 TOUR VAUBAN / CARANET-SUR-MER
CARANET-SUR-MER / 02 98 27 41 12
- 2 MAISON DES MINÉRAUX / CROZON - SAINT HERNET
MAISON DES MINÉRAUX / 02 98 27 35 90
- 3 MUSÉE VIVANT DES VIEUX MÉTIERS / ANGOL
MUSÉE VIVANT DES VIEUX MÉTIERS / 02 98 27 35 90
- 4 BREIZH ODYSSEE / LANDÉVENNEC
BREIZH ODYSSEE / 02 98 27 35 90
- 5 ANCIENNE ABBAYE - MUSÉE / LANDÉVENNEC
ANCIENNE ABBAYE - MUSÉE / 02 98 27 35 90
- 6 MUSÉE DE L'ÉCOLE RURALE / TRÉDANVAN
MUSÉE DE L'ÉCOLE RURALE / 02 98 27 35 90



CRAPATO ELASTO

Motorboat Rental – No License Required

Beach hut at Morgat Beach

Elasto trampoline • 29160 CROZON-MORGAT

06 88 71 72 22 • dkerdreux@yahoo.fr

www.crapato.fr

Rental of 6 HP semi-rigid Zodiac-type boats, with the possibility of visiting sea caves.

Prices: Please contact us.

Opening period: April to September.

ANCIENNE ABBAYE DE LANDÉVENNEC

Workshops and Historical Visits

Place Yann Landevenneg • 295660 LANDÉVENNEC

02 98 27 35 90 • contact.museelandevenneg@gmail.com

www.musee-abbaye-landevenneg.fr

Founded between the 5th and 6th centuries, the Ancient Abbey of Landévennec is now home to an archaeological site, a museum, a monastic garden, and temporary exhibitions in a remarkable maritime setting. Discover 15 centuries of Breton history through guided tours, interactive activities, and events all year round.

Prices: General: €8, 18-26 years old, teachers, museum pass holders: €7, 8-17 years old, unemployed, disabled visitors: €4, Family pass: €20, Under 8 years old: free.

Opening period: Same schedule as guided tours.

(61)

CROZON PENINSULA - AULNE MARITIME / PRACTICAL GUIDE 2025



ANCIENNE ABBAYE DE LANDÉVENNec

Family-Friendly Workshops

Place Yann Landevennec

295660 LANDÉVENNec • 02 98 27 35 90

contact.museelandevennec@gmail.com

www.musee-abbaye-landevennec.fr

During school holidays from Wednesday to Friday, enjoy family workshops for a fun dive into history:

- Wednesday: Escape Game
- Thursday: Dress Like the Middle Ages
- Friday: Illuminated Manuscript Art

Prices: Paid activity.

Opening period: Same schedule as guided tours.



ANCIENNE ABBAYE DE LANDÉVENNec

History Rendezvous – Outdoor Cinema

Place Yann Landevennec • 295660 LANDÉVENNec • 02 98 27 35 90

contact.museelandevennec@gmail.com • www.musee-abbaye-landevennec.fr

As part of a historical re-enactment weekend centered on the Middle Ages, join us for an open-air screening of the famous film *The Name of the Rose* on Saturday, May 10, 2025, at nightfall.

Prices: Paid event.

Opening period: Same schedule as guided tours.



TOUR VAUBAN DE CAMARET/MER

The Guardian of Armorican Coasts

Le Sillon • 29570 CAMARET/MER

02 98 27 91 12 • 02 98 27 89 53

tourvauban@camaretsurmer.fr

www.facebook.com/tourvauban.camaretsurmer

A unique piece of French military architecture, the «Golden Tower» has been watching over the Camaret Bay and the Brest harbor entrance for over 300 years. Now a center for interpreting Vauban's work, the tower tells the story of the engineer and its construction.

Prices: General: €6, Reduced: €3, Guided tour: €7, Family pass: €15. Group rates available upon request.

Opening period: April to November.



MÉMORIAL DE LA BATAILLE DE L'ATLANTIQUE

Museum

Pointe de Pen Hir • 29590 CAMARET/MER

02 98 27 92 58

Since 1990, this museum has stood on the very site of historic events. Sheltered beneath the thick concrete of a German casemate from the 1942 Atlantic Wall, this memorial honors those who perished at sea during the colossal battle for freedom.

Prices: Adults: €4, Free for children under 12, disabled visitors, military personnel, and school groups.

Opening period: April to September, 2 PM to 6 PM.



MAISON DES MINÉRAUX & THE UNIQUE GARDEN OF BRITTANY

Scientific & Natural Heritage Museum –
Geopark Armorique



Saint-Hernot • 29160 CROZON • 02 98 27 19 73
contact@maison-des-mineraux.org

www.maison-des-mineraux.org

Facebook et Instagram : @MaisonMineraux

Discover the world of rocks and regional geology through interactive exhibits: iconic sites of the Crozon Peninsula, an interactive digital sandbox, Breton rocks and minerals, and the largest collection of fluorescent minerals in Europe. Also, explore an original garden featuring local rock installations. Guided tours and special events available during holidays.

Prices: Adults: €8, Reduced: €5.50.

Opening period: April 6 – November 2, 2025.

Check the website for detailed schedules.



MUSÉE DE L'ÉCOLE RURALE

Rural School Museum



4, Kergroas • 29560 TRÉGARVAN • 02 98 26 04 72

contact@musee-ecole.fr • www.musee-ecole.fr

Step into the history of rural education, from early 20th-century classrooms to today's school life. More than just a visit, become a witness and participant in exhibitions closely linked to education.

Prices: General: €6, Reduced: €5, Disabled visitors: €3.50, Children (8-17 years old): €3.50, Family pass: €17.

Opening period: February 9 – October 31, with additional openings in December. Check the website for schedules.

MAISON DES MINÉRAUX PROFESSOR KAOLIN'S LAB

Family Science Workshops



Saint-Hernot, route du Cap de la Chèvre

29160 CROZON • 02 98 27 19 73

contact@maison-des-mineraux.org

www.maison-des-mineraux.org

Discover Earth sciences through fun, hands-on workshops with Professor Kaolin! A great activity for children and parents to experiment and learn together.

Duration: 1h30

Prices: €8 per person (ages 7 and up).

Opening period: School holidays, Wednesdays.

Reservation required.

MAISON DES MINÉRAUX BRITTANY'S NATURAL RESERVE

Come and Discover the Sites and Treasures of
the Geological Nature Reserve of the Crozon
Peninsula – Aulne Maritime



Saint-Hernot, route du Cap de la Chèvre

29160 CROZON • 02 98 27 19 73

contact@maison-des-mineraux.org

www.maison-des-mineraux.org

As a major partner of the reserve, the museum offers numerous discovery activities: nature walks, family-friendly workshops, sound explorations, and guided museum tours.





BREIZH ODYSSEE

The Grand History of Brittany

1 Place de la Mairie • 29560 LANDÉVENNEC
02 98 23 63 05 • contact@breizh-odyssee.bzh
www.breizh-odyssee.bzh

Explore Breton heritage, culture, and history through immersive exhibitions, storytelling, and interactive displays. Don't miss the special exhibition Musicians of Brittany.

Prices: Adults: €9.50, Children (8-18 years): €5, Under 8: Free, Family pass: €24.

Opening period: April 8 - September 15: open daily. Wednesday to Sunday the rest of the year.



MUSÉE MÉMOIRES 39-45

Historical Museum

Prédic • Route de la pointe St Mathieu
29217 PLOUGONVELIN • 02 29 02 84 56
contact@museememoires39-45.fr
www.museememoires39-45.fr

Just a stone's throw from Pointe Saint-Mathieu, step back in time in this exceptional command bunker. Spread over five floors, the museum features an exhibition centered on testimonies and anecdotes, richly illustrated by thousands of objects and documents. Start by immersing yourself in the daily life of soldiers on the Atlantic Wall, then relive the history of the war in Brittany, told by those who experienced it.

Prices: Adults: €8.50, Children: €5.50, Reduced: €6.50

Opening Period: Open 7/7 from April 1st to November 11th, from 10 AM to 6:30 PM.

Open 7/7 during Christmas and winter holidays (except public holidays) from 10 AM to 6 PM.



VIVEZ UNE EXPÉRIENCE UNIQUE

BREIZH
ODYSSEE

Découvrez
la Grande Histoire
de la Bretagne

📍 LANDEVENNEC - PRESQUÎLE DE CROZON (29)

Plus d'informations sur www.breizh-odyssee.bzh



© Sentier des loutres - Océanopolis 2024 / JF Le Bescond - L'Œil de Paco

Océanopolis Brest

National Scientific Culture Center dedicated to the Ocean

Port de Plaisance du Moulin Blanc • 29000 BREST
02 98 34 40 40 • www.oceanopolis.com

In 2025, Océanopolis is undergoing a major transformation but remains open at a special rate, offering a reinvented program featuring its aquariums, activities, and guided tours. Come (re)discover the Brittany Pavilion, the Otter Trail, the new interactive and family-friendly Cité des Océanauts, the Océanolab research laboratory, as well as four newly designed thematic gardens of botanical interest!

NEW: La Cité des Océanauts, an ocean discovery space. A new freely accessible shop and on-site dining.

Buy your tickets online in advance.

For information & updates, visit www.oceanopolis.com



MUSÉE VIVANT DES VIEUX MÉTIERS

Museum

1, rue Saint-Guérolé • 29560 ARGOL
02 56 04 81 59 • contact@museevivant.fr
www.museevivant.fr

Our museum brings the trades of the past century back to life. Passionate men and women share their expertise through exchanges and live demonstrations at each permanent workshop, showcasing traditional crafts and activities from the past.

Children and adults alike can observe the mastery of techniques: the skilled touch and the craftsmanship behind each object.

Outdoors, explore the Ty-Coz, the garden, the washhouse, and the bread oven.

Prices: Adults: €7, Children: €3.50

Opening Period: From April 6th to October 30th

Schedules & activity calendar available on our website: www.museevivant.fr



Changeons le regard sur l'Océan

PROGRAMMATION ET TARIFS EXCEPTIONNELS pour (r)découvrir le pavillon Bretagne, la nouvelle Cité des Océanauts, Océanolab et le sentier des loutres, comme lors de la fermeture temporaire des pavillons Polaire et Tropical*

Achetez vos billets à l'avance

Suivez-nous sur

Océanopolis BREST

*Espaces visitables et infos complémentaires sur oceanopolis.com





ECOMUSÉE DES MONTS D'ARRÉE

Built and Natural Heritage



Maison Cornec • 12, le bourg
29190 SAINT-RIVOAL • 02 98 68 87 76
contact@ecomusee-monts-arree.fr
www.ecomusee-monts-arree.fr

A collection of 18th-century peasant houses, reflecting traditional life in harmony with the surrounding natural resources. Maison Cornec is located at the crossroads of hiking trails that lead through the emblematic sites of the Monts d'Arrée, at the foot of Mont Saint-Michel, accessible via the GR trail (4 km).

Prices: Free pricing. Guided tours, workshops, and activities available.

Opening Period: From May 1st to September 21st, 2025.

Opening Hours: May 1st to June 30th & September 1st to 21st: Sunday to Friday, 10 AM to 6 PM
July & August: Open daily from 10 AM to 6 PM

**383 MARCHES POUR
SURPLOMBER LA BRETAGNE**

EXPLOREZ L'UNIVERS DE L'ÎLE VIERGE

abers-tourisme.com

FUN ACTIVITIES AND SPORTS



CRAPATO ELASTO

Elasto trampoline

Morgat Beach • 29160 MORGAT • 06 88 71 72 22
dkerdreux@yahoo.fr • www.crapato.fr

Elasto on a trampoline, hooked to elastic bands, I do somersaults!

Inflatable mouse: an educational course with a slide for the little ones.

Prices: Elasto: €5, Group discounts available. Inflatable Mouse: €4.

Opening Period: From April to September.



LOST LABYRINTH & GUINGUETTE

Escape Game

Route de Dinan • 29160 CROZON
07 75 70 00 79 • lost.crozon@protonmail.com

Facebook : Lost - Labyrinthe & Guinguette

Instagram : Lost.crozon.labyrinthe

Explore the giant wooden fence labyrinth or relax at the guinguette!

- A family-friendly outdoor Escape Game where you must find the exit door and its code.

- A Guinguette: Vegetarian food, tea room, and bar to enjoy and refresh yourself.

Prices: Labyrinth: €10 per person (free for children under 5).

Guinguette: Free access.

Opening Period: From April to November.



PISCINE NAUTIL'YS

Swimming

1 rue Alain • 29160 CROZON • 02 98 16 00 40

piscine.nautilys@comcom-crozon.bzh

www.piscinenautils.bzh

Leisure pool (water games, massaging benches), 2 swimming lanes, paddling pool, waterslide, wellness area (sauna, hammam, jacuzzi), aquagym, and aquabiking classes. Swimming lessons for children of all levels.

Prices: Children under 3 years old: free. Youth (3-17 years), job seekers, students, people with reduced mobility: €4.10, Adults: €4.90.

Opening Period: Please consult us for details.



CHAR A VOILE DU BOUT DU MONDE

Sand Yachting

Lestrevet/Pentrez Beach (PLOMODIERN)

& Goulien/Kersiguénou Beach (CROZON)

06 81 63 83 74

charavoileduboutdumonde@gmail.com

www.charavoileduboutdumonde.com

Open year-round, our sand yachting school will introduce you to this fun activity in a beautiful setting, with vehicles that offer sensations of speed and freedom. Accessible from age 5 in a double yacht, it's an activity to enjoy as a family! As proof of quality and commitment, the school is an ambassador for Marque Bretagne and Tout Commence en Finistère.

Visit our website or contact us for reservations or more information.

Prices: From €20 per person.

Opening Period: Open year-round, from 9 AM to 8 PM, 7 days a week, depending on the tides.

TOUT
commence
en FINISTÈRE



S'AMUSER • SE DÉPENSER • RIRE • SE RELAXER

100% DÉTENTE

**Vivez
votre été
à nos côtés!**

1 RUE ALAIN
29160 CROZON - MOROAT

02 98 16 00 40
piscine.nautilys@comcom-crozon.bzh

Toboggan

Aquagym

Pataugeoire

Jeux d'eau

Aqua-dos

Jacuzzi

Aquabike





FUNPARK

Tree Climbing

Route de Dinan • 29160 CROZON

06 68 08 07 67 • www.funpark.bzh

Funpark welcomes you to a green park to practice tree climbing in complete safety.

A brand new space dedicated to children aged 3 and above.

5 courses suitable for children (1m to 1.30m) and 7 courses for older kids (over 1.30m) with different heights and difficulty levels (up to 15m high).

Prices: From €5 to €19.

Opening Period: From February to November.



MAMIE SAC À DOS

Galettes and Crêpes Workshop

Cider Workshop Location, Rozavern Cidery

29280 TELGRUC/MER • 06 21 95 19 65

www.ateliercrepescrozon.fr

Come learn how to make crêpes & galettes.

Workshop in a friendly atmosphere, maximum 6 people.

Every Friday during school holidays.

Duration: 3 hours, from 10 AM to 1 PM.

Crêpier for the evening

- Learn how to make crêpes and galettes + Ape-ritif Box + Tasting meal.

- Become a crêpier for the evening – Serve the public under the guidance of your instructor who will assist you in filling and folding the crêpes and galettes.

Duration: 6 hours, from 3 PM to 9 PM.

Prices: €50 - €85.

Opening Period: Please consult us for schedules.

WELL-BEING



AYURVEDA PRESQU'ÎLE

Massages

17 rue de Reims • 29160 CROZON • 06 08 23 68 76

ayurveda.presquile@gmail.com

www.ayurvedapresquile.com

Inspired by the ancient knowledge of India and China, we've created a small cocoon in the heart of Crozon to welcome you. We offer various massages and treatments from Ayurveda and Traditional Chinese Medicine. We also organize all-inclusive stays and workshops, so feel free to check out our website!

We look forward to taking care of you!

Johanne and Lou

LEISURE PARKS



AVEN PARC

Leisure Park and Educational Farm

Lieu-dit Kergoz • 29930 PONT-AVEN

02 98 09 67 52 • avenparc@gmail.com

www.avenparc.com

Looking for adventure in nature? Discover Aven Parc: the leisure park of southern Finistère. In a green and natural setting, enjoy a day full of laughter and surprises with many attractions waiting for you. Attend our magic show, participate in the «bottle-feeding» session at the farm, and dive into a colorful world with our actors where Aven Parc puts on its circus show.

Prices: From €14.50 to €17.50

Opening Period: From April 5 to September 21



L'AQUASHOW

Aquariums and Bird Show

Rue du Goyen • 29770 AUDIERNE

02 98 70 03 03 • contact@aquarium.fr

www.aquarium.fr

Come and discover all the Breton sea life in aquariums and enjoy a unique bird show in Britanny. A fun and educational visit lasting 2.5 hours for the whole family, just a short distance from Pointe du Raz.

Prices: Adults: €15, Children (4-12 years): €10, Reduced: €13

Opening Period: From April to September, every day (April to June and September: 10 AM - 6 PM, July/August: 10 AM - 7 PM. Between October and March, during school holidays (14h-18h).



ADRENATURE PARC AVENTURE

Adventure Park, Tree Climbing, Outdoor Escape Game, Scavenger Hunt, Orienteering, Snack

Lieu dit Moulin du Cosquer • 29140 MELGVEN

06 82 78 79 10 • contact@adrenature.fr

www.adrenature.fr

The largest adventure park in Finistère, set in nature, offering unlimited access for all ages to tree climbing, outdoor escape games, scavenger hunts, orienteering, and snacks.

Prices: From €12 to €24

Opening Period: From April to early November



RESTAURANT / CATERER



RACINES

Traditional Restaurant / Caterer

82 bd de la France Libre • 29160 CROZON
02 98 73 30 51 • restaurant.racines.crozon@orange.fr
www.restaurant-racines-crozon@orange.fr

Located between Crozon and Morgat, Restaurant Racines welcomes you all year round for lunch from Tuesday to Saturday in a warm and friendly atmosphere. We offer traditional cuisine, available on-site or for takeaway, made with seasonal, fresh, and local products. The menu, written on the chalkboard, is updated daily depending on the market.

- Parking, disabled access, vacation vouchers, restaurant tickets
- Catering services
- The possibility of privatizing the upstairs room for 20 people
- Reservations recommended



LE MUTIN GOURMAND

Traditional Restaurant, Local Cuisine Between Land and Sea

1 Rue Graveran • 29160 CROZON
09 60 11 90 80 • contact@lemutingourmand.fr
www.lemutingourmand.fr

At Le Mutin Gourmand, all of Brittany is invited to the plate. Chef Erwan Euzen is well acquainted with the local producers. He selects his products daily from local sources to offer a high-quality menu showcasing the delights of the Breton terroir. The fresh seasonal products enhance a fully homemade cuisine, from quickly devoured breads to very indulgent desserts. There's no doubt that Erwan and his team will share their love for the Crozon Peninsula with you in a friendly and authentic setting.

Opening Hours: Tuesday to Saturday. Lunch from 12:00 PM to 1:30 PM and dinner from 7:00 PM to 8:30 PM. Parking nearby, disabled access, group menu available upon request.



AWEN KAFE

Restaurant/Bar

Place de la Mairie • 29560 LANDÉVENNEC
02 98 86 73 47 • contact@breizh-odyssee.bzh
www.breizh-odyssee.bzh

With an exceptional view of the Brest harbor, Awen Kafe Landévennec offers a menu focusing on homemade dishes with fresh, local, and organic products. Whether you're here for a meal, an aperitif, or a sweet break, the Awen Kafe team welcomes you in an extraordinary setting. Parking nearby, disabled access, group menu available upon request.

Opening Period: From April 8 to September 15, 2025, open 7 days a week. From Wednesday to Sunday during the rest of the year.



CHEZ MÉMÉ GERMAINE

Bar/Crêperie

Plage du Vervac'h • Pointe de Pen Hir
29570 CAMARET/MER • 02 98 73 37 50

At Chez Germaine, you settle down facing the sea in a breathtaking setting. It's a family atmosphere with good friends, great crêpes, and good music to top it off. Events and concerts are shared on the Facebook page. Continuous service without reservations from 12:00 PM to 10:00 PM.

Opening Period: Closed on Monday and Tuesday, except July and August (open 7 days a week).



L'escapade

BAR/RESTAURANT

L'ESCAPADE

Traditional Restaurant

1 Pencran • 29560 TELGRUC/MER

02 98 27 72 79 • telgruc.escapade29@gmail.com

L'Escapade in Telgruc-sur-Mer is a traditional restaurant known for its warm welcome and simple yet delicious cuisine. It offers a generous lunchtime menu and homemade dishes, perfect for a friendly break. In summer, their homemade mussels and fries attract lovers of local specialties. A takeaway pizza service also complements the offer to delight both young and old. With its family-friendly atmosphere and attentive service, L'Escapade is a must-visit for an authentic and convivial meal.



LE COMPTOIR À HUÎTRES

Bar / Shellfish Tank

55 rue des Mareyeurs • 29570 CAMARET/MER

02 98 73 86 76

In an unusual setting between a shellfish tank and a wine bar, we welcome you at Le Comptoir à Huîtres in the old fish market on the fishing port. We offer oysters, shrimp, whelks, as well as platters of charcuterie and cheese on our sunny terrace in the evening or inside our fisherman's cabin, in a warm and authentic atmosphere. We also offer takeaway sales of local shellfish, crustaceans, and fish.

Parking available.

Opening Hours: All year round

During the season: 10:00 AM – 2:00 PM and 5:00 PM – 10:00 PM. Closed on Wednesdays.

Off-season: 10:00 AM – 2:00 PM and 5:00 PM – 9:00 PM. Closed on Tuesdays and Wednesdays.



BISTROT LE 34

Hotel / Restaurant

7 rue de l'Atlantique • 29160 CROZON

02 98 26 05 90 • contact@escale-marine.bzh

www.escale-marine.bzh/bistrot-le-34

Just 100 meters from the beautiful Morgat beach, Bistrot Le 34 invites you to savor traditional seasonal cuisine highlighting local products. Discover the flavors of the region from the restaurant's terrace or on our comfortable indoor benches. Stop by anytime for a refreshing drink at the bar. Public parking nearby, high chairs, children's menu, and free Wi-Fi.

Prices: Market menu from €24.

Group menus available upon request (room privatization possible).

Hours: Restaurant open for dinner year-round, from 7:00 PM to 10:00 PM, and lunch upon request.



MAMIE SAC À DOS

Home Delivery

06 21 95 19 65 • www.traiteuradomicilecrozon.fr

Mamie Sac à Dos offers home delivery to your vacation spot. Having traveled extensively, I've brought back the warmth, flavors of shared meals, and influences from Africa to Asia.

World flavors – Brunch – Aperitif Boxes.

Prices: Please inquire.

LOCAL PRODUCERS

CIDRERIE DE ROZAVERN

Jennifer Scouarnec
and Nicolas Mazeau



Kerferman • 29560 TELGRUC/MER • 02 98 26 01 44
contact@rozavern.fr • www.rozavern.fr

In our orchards cultivated through organic farming, we harvest fifty varieties of apples that will be used in our ciders, including the AOP Cornouaille, apple juice, Pommeau, Lambig de Bretagne A.O.C., cider jelly, and cider vinegar. Labels: Organic Farming, A.O.P., A.O.C., Valeurs Parc, Bienvenue à la Ferme. Direct sales at the farm (+ local markets and nearby shops).

In July-August:

- «Bienvenue à la Ferme» farmers' market at the cidery every Monday from 5 PM to 8 PM, followed by a free concert at 8 PM. Food available on-site.
- Bar open on Fridays.

Information, exhibitors, and schedule on www.rozavern.fr.

Tasting and visits: April to September, Monday to Saturday from 10 AM to 7 PM. October to March, Friday and Saturday from 10 AM to 7 PM. Visit www.rozavern.fr for details.

Guided tours: In July-August, every Tuesday and Thursday at 11 AM and 6 PM.

CONSERVIERIE KERBRIANT

Canning Company

Parc Activités Lannugat Nord,
32 rue Jean Kervoalen • 29100 DOUARNENEZ
02 98 70 52 44 • contact@kerbriant.fr
www.kerbriant.fr

The last artisanal and family-run canning factory for seafood in Douarnenez, we prepare and transform everything on-site, mostly by hand, nearly in the traditional way. We offer snacks for aperitifs, family meals, or large gatherings, all following the owner's motto: «People should enjoy eating.» The extra touch: traditional recipes, made the old-fashioned way without colorants, preservatives, or flavor enhancers.

Visits and tastings: free, by appointment only.

**+ de 30 producteurs
accessibles 24h/24 et 7j/7 !**

**17 pizzas faites main
1 pizza du mois
Desserts & boissons !**

**9 route de
Chateaulin
à Tal ar Groas**

**Parking
station Total
& Brit Cuisine**

Le Garde-Manger
The Factory
MANCHE DE PRODUCTEURS
24h/24 7j/7

Pizza 24h/24
Fraîche & Artisanale
L'UNE MANIÈRE
PIZZA L'OUEST

Map labels: Lannugat, Le Faou, Brit Cuisine, BOCETERIE, Chateaulin, Crozon, Tal ar Groas, Total.



MAGASIN BIO LA VIE CLAIRE

Organic and Local Products

82 bd de la France Libre • 29160 CROZON
02 98 81 06 99

Your La Vie Claire organic store welcomes you in a pleasant setting between Crozon and Mor-gat. We offer a wide range of organic and local products: seasonal fruits and vegetables, sweet and savory groceries, bulk items, wines, cheeses, freshly baked sourdough bread, gluten-free products, and beauty and wellness items. All kinds of organic products that will excite your taste buds. Need a little break? You can relax on the sunny terrace... Follow our updates on Facebook and Instagram.

Opening: Monday to Saturday without interruption + Sunday mornings (July and August). Hours: Monday 10 AM–7 PM, Tuesday to Saturday 9 AM–7 PM.



LA MAISON DE LA SARDINE

Canned Seafood / Grocery / Décor

24 Quai Gustave Toudouze • 29570 CAMARET/MER
09 87 03 09 28

boutique.camaret@pointedepenmarch.com
www.pointedepenmarch.com

Our store, La Maison de la Sardine, invites you to bring the best of Brittany and fishing home with a selection of products related to the richness of local heritage: premium POINTE DE PENMARC'H canned seafood, Breton snacks and grocery products, décor items...

Opening: April to early November and during Christmas school holidays.



CROZON | RUE CROAS AN DOFFEN



LE PANIER DE MAMOUNETTE

Gourmet Grocery & General Food

32 rue Général de Gaulle • 29590 LE FAOU
02 98 81 06 21

Le Panier de Mamounette is located in the heart of LE FAOU, a charming small town on the edge of the Crozon Peninsula. In our general and fine grocery store, you will find local products, fresh fruits and vegetables, organic and local items, cheeses cut to order, and always a warm welcome. English spoken/Deutsch gesprochen.

Opening: Tuesday to Saturday from 9 AM to 12:30 PM and 3 PM to 7 PM. Sunday from 9 AM to 12:30 PM and 5 PM to 7 PM. From June 15 to August 30: Monday to Saturday from 8:30 AM to 12:30 PM and 3 PM to 7:30 PM. Sunday from 9 AM to 12:30 PM and 5 PM to 7:30 PM.



BRASSERIE O'TAQUET

Beers

2 Route de Lanvéoc, Tal Ar Groas • 29160 CROZON
02 98 26 18 13 • brasserieotaquet@gmail.com
Facebook : [brasserie o'taquet](#)

Located in 2020 in the heart of the Crozon Peninsula, Brasserie O'Taquet embodies the Breton spirit through its unique craft beers. Each beer is a blend of authenticity, know-how, and passion. Our beers offer a range of flavors, from light blondes to hoppy IPAs and bolder creations. You will find your perfect beer among our brews.

Come discover our products at the brewery's shop, with a view of production, and enjoy a convivial moment on-site.

Opening: All year round, hours available on our Facebook page, closed on Sundays and Mondays.



LIQUEURS DE LANDÉVENNec

Artisanal Liqueurs

Place de la mairie • 29560 LANDÉVENNec
02 98 23 63 05 • contact@breizh-odyssee.bzh
www.breizh-odyssee.bzh

Strawberry liqueur from Plougastel, herbal gin, limoncello, malt brandy... The famous Maison Fisselier (35), a Breton artisan liquorist for over 50 years, invites you to discover its micro-distillery located on the Crozon Peninsula.

Come to Landévennec to explore this distillery, enjoy tasting workshops, and find locally made products in the shop.



DISTILLERIE BRUMENN

Spirits and Liqueurs: Sale and Tasting On-Site

ZA de Keraudren • 29570 CAMARET/MER
06 49 73 57 64 • brumenn.distillerie@gmail.com
[instagram.com/distillerie.brumenn](https://www.instagram.com/distillerie.brumenn)

The distillery of the Crozon Peninsula!

Vincent Conseil, distiller-gatherer, invites you to taste his traditional spirits made with a copper alembic: lambig, whisky, gin, pastis, liqueurs, and aperitifs... Made with plants and fruits harvested from nature, his garden, or locally grown using organic farming.

No matter the weather, get immersed!

Opening: All year round (except January), daily during school holidays, variable hours for the rest of the year. call to confirm hours.

Free sale and tasting every day from 10 AM to 7 PM in July/August.

Free guided tours every Thursday at 10 AM in July/August.



CAFÉS SABLE

Coffee Roasting

ZA de Kéraudren • 29570 CAMARET/MER
06 76 30 01 52 • cafes.sable@gmail.com
www.sable.cafe

Specialty coffees freshly roasted at my workshop located at the gates of Camaret-sur-Mer. We select coffees from producers, sourced directly from farms and cooperatives. Don't hesitate to stop by the workshop and explore coffees from around the world. We also sell coffee beans or ground, tea selections, machines, and accessories.

Opening: All year round. Hours updated on Google.



LA BRASSERIE DU BOUT DU MONDE

Beers, Sodas, and Arranged Rums

Z.A de Quiella • 29590 LE FAOU
09 67 67 01 62 • boutique@terenez.bzh
www.leboutdumonde.bzh

Le Bout du Monde, authenticity since 2013!

Discover our Térénez beers, awarded over 40 times, as well as our sodas and arranged rums. Enjoy our bar-shop with a view of the brewing process and relax on the terrace. Every weekend, there's a lively atmosphere, and the last Friday of the month is Happy Hour! Don't miss out on this unique experience.

Opening: All year round, Tuesday to Saturday. Closed Sundays, Mondays, and holidays.



GÎTE DES CONFITURES

Tastings, Tea Room, Breakfast

21 rue du Poulmic • 29160 LANVÉOC
06 11 22 73 96 • www.gite-crozon.com

Anne Thiollier, master jam maker since 1975, invites you to taste 150 varieties of jams, syrups, chutneys, vinegars, mustards... made from wild or local products, including varieties awarded by «L'Ordre Mondial des Confituriers»: blackberries, sloe berries, hawthorn, and rosehips... We also offer full breakfasts by reservation* with "homemade" products: bread, yogurt, brioche... in a dedicated room with a stunning view of the harbor.

Our shop is 100 meters from the church in Lanvéoc.



BISCUITERIE DE CAMARET

Bakery, Palets, Galettes, Kouign Amann, Caramel Butter, Local Products, Breton Wine, Souvenirs

Route de Crozon • 29570 CAMARET/MER
4 Quai Gustave Toudouze • 29570 CAMARET/MER
11 rue de Reims • 29160 CROZON
02 98 27 88 08

service-clients@biscuiteriedecamaret.com
www.biscuiteriedecamaret.com

In this family business, you can watch the making of Breton cake, prune far, and the famous Kouign Amann. Free tastings of galettes and Breton palets are available. In the shop, find a wide range of local products: artisanal preserves, sweets, hand-painted porcelain, and faïence.

Opening: All year round, including Sundays and holidays, except on December 25 and January 1. Off-season: 9 AM-7 PM, High season: 9 AM-8 PM.

BISCUITERIE JAIN

Biscuit and Artisanal Products

11 rte de Châteaulin • 29160 CROZON
02 98 92 50 63 • biscuiterie.jain@wanadoo.fr
www.biscuiterie-jain.com

In Crozon (Tal Ar Groas), discover our artisanal biscuit shop offering a wide variety of products: galets, palets, Breton cakes, crepes, kouign Amann, and our original creation: the «lichouzie» (small good thing in Breton), in plain, chocolate chip, caramel butter, buckwheat, or hazelnuts, along with our canned goods and gourmet grocery items.

In our Plonévez-Porzay store: Free guided tours from July 11 to August 20, on Fridays, Saturdays, and Mondays at 11 AM, 4 PM, 5 PM, and 6 PM (group reservations required in the off-season).

Opening: All year round.

Seasonal hours: 7/7 from 9:30 AM to 7:30 PM.

Off-season: 7/7 from 10:00 AM to 12:30 PM and 2:30 PM to 6:30 PM.

BOUTIQUE BREIZH ODYSSEE

Breton Products

1 Place de la mairie • 29560 LANDÉVENNEC
02 98 23 63 05 • contact@breizh-odyssee.bzh
www.breizh-odyssee.bzh

Find in our Landévennec shop a selection of Breton gourmet and cultural products for adults and children. A celebration of craftsmanship and Breton culture in all its forms.

Opening: High season from April 8 to September 15, 2025, open 7/7. Wednesday to Sunday the rest of the year.



SHOPS



COMPTOIR DE LA MER

Fashion, Fishing, Nautical, Lifestyle, Décor, and Culture

Quai Auguste Tephany • 29570 CAMARET/MER
02 98 27 99 42 • www.comptoirdelamer.fr

The history of the Maritime Cooperatives has shaped the development of Comptoir de la Mer, whose brand identity is strongly tied to the sea. «The last space of freedom on Earth is the sea,» the network's motto invites you to explore its «Fishing, Nautical, Lifestyle, Décor, Culture» themes within its stores in Camaret-sur-Mer, Douarnenez, and Audierne.



CAMARET-SUR-MER Quai Téphany 02 98 27 91 03



PRESQU'ÎLE COMPTOIR MARINE

Marine Clothing, Fishing Gear, Accessories,
Décor, Souvenirs, Beach Articles, Boat
Maintenance Products, Stainless Steel Screws,
Gas, Hiking



1 allée des Tilleuls • 29160 CROZON-MORGAT

02 98 26 61 15 • comptoir.marine29@orange.fr

Located in the heart of Morgat, just 150 meters from the beach and the GR34 trail, and 3 minutes by bike from the marina, Presqu'île Comptoir Marine offers a wide range of sea-related products: clothing from brands like Hublot, Helly Hansen, Méduse, Aigle, beach articles, accessories, maintenance and repair products, rope, cutlery, stainless steel screws sold individually, kites, hiking accessories, and Campingaz refills (for boats, hikers, RVs, barbecues...).

Opening: Year-round, variable hours.

Scan the QR code to check for updates.



SERGE KERGOAT ÉDITIONS

Nature and Illustration Books

2 rue de liège • 29570 CAMARET/MER

06 60 29 31 17 • 02 98 27 89 85 • www.zoizo.fr

Serge and Nicole Kergoat specialize in publishing books about birds. The guides are engaging, informative, and enriched with infographics, photographs, and illustrations. The names of birds are listed in English, German, Spanish, and Breton. An illustrated table of contents helps you identify the bird you observe and directs you to the page describing it. Numerous details complement the visuals. A touch of humor makes the birds feel familiar, softening the sometimes concerning aspects of animal welfare.



AZALEA

Textiles and Accessories for Women and Men

7 rue Charles Levenez • 29160 CROZON

02 98 26 13 93 • azaleacrozon29160@gmail.com

Facebook et Instagram : @azalea.crozon

The AZALEA store welcomes you in a 180m² space, offering women's textiles with brands like Vero Moda, Pieces, JXX, Anouk, Ninon, Compania Fantastica, Emilie K, and Etymologie, as well as men's textiles with brands such as Jack & Jones, Anouk, and Ninon.

A wide selection of jewelry, bags, and accessories.

Opening: Our hours are updated on Google.



IMAGE IN

Textiles and Leisure & Outdoor Articles

6 venelle de Reims (opposite the CMB) • 29160 CROZON

The IMAGE IN store welcomes you in a 750m² space and offers:

- A wide range of items related to various activities on the Crozon Peninsula: fishing (with brands like Ultimate Fishing, Shimano, Daiwa, etc.), hiking (with brands such as Meindl, The North Face, Asolo, Columbia, Aulp, etc.), gliding (large selection of bodyboards), diving, swimming, beach articles, running, and fitness gear.
- Numerous brands of men's and women's clothing: Ragwear, The North Face, Billabong, Mousqueton, Elle est où la Mer, etc.
- A rental service for surfboards, bodyboards, kayaks, and paddleboards (reservations at the store and Quai Kador in Morgat).

Opening: Our hours are updated on Google.



DRUGSTORE

Tobacco, Press, Lottery, Clothing, Gifts, Greeting Cards

12 quai Gustave Toudouze • 29570 CAMARET/MER
02 98 86 73 49

Welcome to the Drugstore!

Located on the harbor of Camaret, in a beautiful new setting, the Drugstore team welcomes you to discover a wide range of products. You'll find almost everything: press, lottery, tobacco, bread depot, gifts, souvenirs, adult and children's clothing, jewelry, toys, postcards, IGN maps, beach items, postal products, and more! Come quickly; you'll be charmed by this very original store... The place to be!

Opening: Year-round

Hours: 7 days a week, Monday to Saturday 8 AM-8 PM, and Sunday 9 AM-7 PM. July and August: Store closes at 8:30 PM every day, Sunday included.



DRUGSTORE

Grocery, Food

12 quai Gustave Toudouze • 29570 CAMARET/MER
02 98 86 73 49

A very nice idea to add groceries to our Drugstore! Fresh seasonal fruits and vegetables, sweet and savory groceries, fresh and frozen products, soft drinks, alcohol, and a selection of candies and cakes that will surprise you! A wonderful range of original products for both adults and children that will awaken your taste buds!

The place to be!

Opening: Year-round

Hours: 7 days a week, Monday to Saturday 8 AM-8 PM, and Sunday 9 AM-7 PM. July and August: Store closes at 8:30 PM every day, Sunday included.



MALICE (CENTRAKOR MEMBER)

Home Equipment, Leisure

ZAC du Bourg • 29160 CROZON
Rue Paul Gauguin • 29150 CHÂTEAULIN
02 98 16 06 01 (Crozon) 02 98 86 48 16 (Châteaulin)
contact@magasin-malice.fr
www.magasin-malice.fr

Everything to decorate, organize, and entertain. Also, everything to create, with a sewing, wool, fabric, and crafts section. Trendy interior and exterior products from brands like Hespéride, Atmosphéra, and Ostaria... A team of professionals will be happy to offer advice. Always at very affordable prices!



CARREFOUR CONTACT

Supermarket

7 rue Alsace Lorraine • 29160 CROZON
02 98 27 06 08

www.carrefour.fr/magasin/contact-crozon

Welcome to Carrefour Contact!

Your daily shopping in the heart of town with a warm atmosphere! Enjoy excellent service, a smile, and a friendly team!

Find all your everyday products, as well as a market area (traditional butchery, deli, rotisserie, fruits and vegetables, bread, and pastries).

Catering menu - Drive service - Home Delivery

Opening: Year-round, Monday to Saturday from 8 AM to 8 PM, Sunday from 9 AM to 1 PM.

Special opening on Sundays from 3:30 PM to 8 PM from July 13 to August 17.



BLANCHE HERMINE VTC

Professional Chauffeur Service, All Distances,
7 Days a Week

BREST • 06 68 64 33 40

www.blanche-hermine-vtc.fr

Professional chauffeur with the qualification for authority and security drivers. A written quote will be provided and remains fixed. No meter that increases as the journey progresses. Travel services available for all distances, 7 days a week, 24 hours a day. Excellent value for money. Enjoy a trip in a high-end electric vehicle. 20% immediate discount on journeys over 50 km. Credit cards accepted, invoices available upon request.

Prices: Contact us for more information.



CAMARET-SUR-MER

U le commerce qui profite à tous

Du LUNDI au SAMEDI

de 8 h 30 à 19 h 30

DIMANCHE de 9 H à 12 h 45

Rue du Loch

Tél. 02 98 27 93 24



VOTRE DRIVE À DÉMÉNAGÉ SUR LA ZONE DE L'HYPERMARCHÉ

E.Leclerc DRIVE

Retrouvez toute notre actualité sur nos réseaux sociaux

@leclerccrozon

CROZON

CINEMA



CINÉMAS DU BOUT DU MONDE

Film Screening

CINÉMA ROCAMADOUR

4 bis, rue du Roz • 29570 CAMARET/MER

CINÉMA LE REX

41 rue de la Chalotais • 29160 CROZON

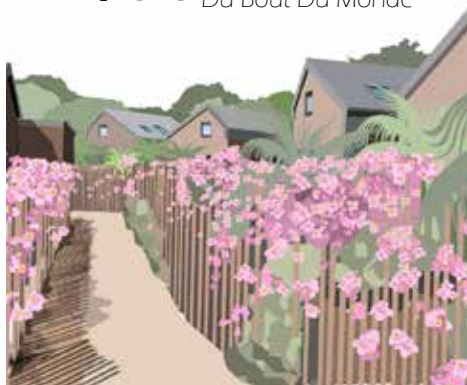
09 66 98 00 21 • cine.boutdumonde@orange.fr

www.cinema-rocamadour.fr

Art & Essai-classified theaters - Member of RAdi (Rocamadour: short film shown before each screening) - Theaters equipped with 3D digital projection.

Les CABINES

Du Bout Du Monde



Contactez-nous:

Tel: 06-52-39-28-99

lescabinestuboutdumonde@gmail.com

Reservez sur notre Site internet:

les-cabines-du-bout-du-monde.fr



Maisons en bois de 53 à 75m² toutes équipées à 5 minutes à pied de la plage de Morgat. Chaque cabine est indépendante et dispose d'une jolie terrasse en bois et d'un jardin privatif. Proximité immédiate Boulangerie, Restaurant, Epicerie Bio, Salle de Sport, Boutiques.



@lescabinestuboutdumonde



@lescabinestuboutdumonde_morgat





THE TOURIST TAX

The tourist tax paid by visitors staying for a fee helps fund the Tourism Office in its operations and promotional activities for tourism, as well as expenses related to the development of local tourism and the development of tourist spaces.





ACCOMMODATIONS



The range of accommodations offered on our website will help you find the option best suited to your needs: hotels, furnished rentals and guest rooms, lodges, residences and holiday villages, campsites, motorhome areas, and furnished accommodations.



Where
to sleep?





BEAUTIFUL WEATHER,
BEAUTIFUL SEA!



The weather
and tide times
for 2025.





MOTORHOMES AND CONVERTED VEHICLES



Every year, thousands of you travel our territory in motorhomes or converted vehicles, drawn by the beauty of its landscapes. These still-wild spaces are also extremely fragile. That's why, in order to balance the discovery of sites and environmental preservation, follow good practices!

To have a peaceful night, we invite you to visit the welcome areas (rest areas, service areas, campsites).

PARKING AREAS:

- Roscanvel
- Lanvéoc
- Landévennec
- Telgruc/mer
- Argol
- Rosnoën
- Pont-de-Buis-lès-Quimerç'h

REST AREAS:

- Crozon • Morgat
- Camaret/mer • Le Faou
- Le Fret

SERVICE AREAS:

- Crozon
- Port de Térénez

L'AMÉTHYSTE



The cultural center L'Améthyste hosts events for all audiences throughout the year. Concerts, dance, theater, circus, conferences... you will have plenty of choices.

Find the program and schedules on the website:

www.comcom-crozon.bzh

MORE INFO:

L'Améthyste

1 place Étienne Schlumberger • 29160 CROZON

Tél. 02 98 86 49 08

Tickets and information available online, on event days at the venue, and at the Crozon Tourist Office.



Dive into the adventure of Sensation Bretagne, where each stop is an invitation to live, feel, and recharge in a way that goes beyond simple travel to become an unforgettable experience. The Breton coastline awaits you, ready to offer 30 reasons to fall in love with its shores and traditions.



BREST TERRES OCÉANES

**THE PRESQU'ÎLE DE CROZON AULNE MARITIME
AT THE HEART OF BREST TERRES OCÉANES**

GET AWAY ON THE ROUTE DES PHARES OF BREST TERRES OCÉANES

Here lies the largest concentration of lighthouses in the world, with 20 sea sentinels to discover from the coast, at sea, or on islands. Among the must-see lighthouses: St-Mathieu in Plougonvelin and the Île Vierge in Plouguerneau (the tallest in Europe).

BREATHE IN THE SEA AIR BY FOOT, BIKE, AND ON THE WATER

The GR®34, a famous Breton trail, and the Véloroute, La Littorale V45, await those who enjoy hiking or day trips.

For water lovers: kayaking in the Abers, swimrun on the Côte des Légendes, paddleboarding on the Daoulas River, and snorkeling in the Molène archipelago.

OUR QUALITY

COMMITMENTS

To welcome, assist, and satisfy with professionalism and good cheer.

To welcome, assist, and satisfy with professionalism and good cheer.

The Tourist Office is a central player for the Presqu'île de Crozon-Aulne Maritime, serving both customers and the local economy. It acts as a representation of local policies, its commitments, and the daily work accomplished by a team of professionals.

That's why, elected officials, local professionals, and the team at the Presqu'île de Crozon - Aulne Maritime Community Tourist Office are committed to doing everything possible to satisfy you throughout your stay, while sharing the identity and respect of our beautiful territory.

Patrick BERTHELOT,
*President of the Community
Tourist Office*



To this end, guided by the quality framework of French Tourist Offices, we commit to:

- **Optimize** the quality of our services
- **Welcome and offer** visitors competent and tailored services
- **Build** customer loyalty

• **Promote and develop** relationships with partners

• **Measure** the quality of our services through operations: surveys, exchange programs, etc.

• **Improve and develop** our services internally through: team meetings, training, visits within our partner network, etc.



THE QUALITY BRAND EVOLVES



The new *Destination d'Excellence* label aims to strengthen quality across all aspects of the tourism offer: accommodations, restaurants, places of visit or leisure, tourist information points (including tourist offices), and transportation.

In addition to the focus on quality reception and services, which drives the sector, this label will particularly enhance the level of demand for environmental responsibility.

It replaces the «Qualité Tourisme» label since May 2024.

OUR DAILY ACTIONS

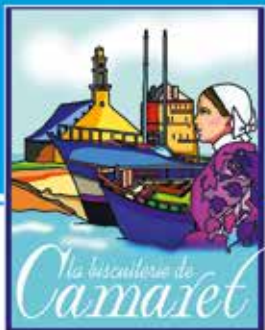
FOR MORE RESPONSIBLE TOURISM

- Reducing paper editions.
- Using **electric bikes** for short team trips.
- **Carpooling** for meetings at the departmental and regional level.
- **Controlling waste:** regulated temperatures in offices and common spaces, water usage signs in restrooms, turning off unnecessary lights.
- Installing sun protection for improved summer comfort: **external solar protection**.
- Practicing **selective waste sorting daily**.
- Forming a «**sustainable tourism**» working group with the implementation of actions.



AND WITH VISITORS

- Distributing the «**Good Practices**» comic book created by the Natural Spaces service of the Community of Communes.
- **Encouraging the download** of our brochures online.
- Before and during stays, the Tourist Office informs clients about **alternatives to car travel**: «Getting Around» pages in publications, website.
- The Tourist Office offers **solutions to facilitate sustainable mobility**, particularly near tourist offices: lists of charging stations, designated bike shelters, and bike rental providers.
- **Promoting off-season stays**: through press receptions, fall-winter photo reports, videos, articles on the website, and publications.



BRETAGNE®

Biscuiterie de Camaret

Dégustation gratuite

Démonstration de la fabrication



Un sachet de 6 galettes OFFERT

*Offre valable une 1 fois par foyer jusqu'au 31/12/2025.

Coupon à présenter en magasin



34 88430 949835

Ouvert tous les jours
y compris les dimanches
et jours fériés

Magasin à Camaret :

Route de Crozon - 29570 Camaret-Sur-Mer Tél. 02 98 27 88 08

4 Quai Gustave Toudouze - 29570 Camaret-Sur-Mer Tél. 02 98 17 05 84

Magasin à Crozon

11 Rue de Reims - 29160 Crozon Tél. 02 56 04 72 76

www.biscuiteriedecamaret.com

